

# The NMC register Wales mid-year update

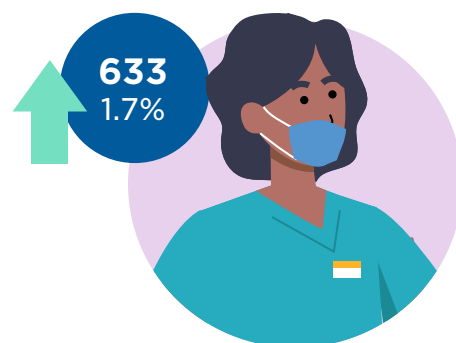
1 April – 30 September 2022



---

**The total number of nursing and midwifery professionals on our register in Wales grew from 38,268 at the beginning of April to 38,901 at the end of September.**

The number of professionals in Wales grew by 607 (1.6%) during the same period the previous year, April to September 2021.



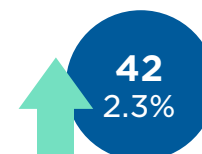
**The number of nurses on our register in Wales grew from 36,045 in April to 36,646 in September.**

From April to September 2021, the number of nurses grew by 560 (1.6%).



**The number of midwives on our register in Wales grew from 1,817 in April to 1,859 in September.**

From April to September 2021, the number of midwives grew by 62 (3.5%).



**The number of dual registrants (people registered as both a nurse and midwife) in Wales fell from 392 in April to 377 in September.**

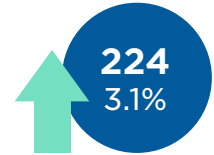
From April to September 2021, the number of dual registrants fell by 15 (-3.6%).



The nursing associate role was introduced in 2019, in England only. Nursing associates may live in Northern Ireland, Scotland and Wales, but only England has regulated a role at this level.



**The number of professionals in Wales who have been on our register for five years or less since their initial registration grew from 7,178 in April to 7,402 in September.**

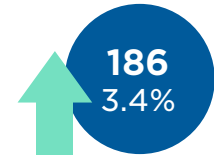


From April to September 2021, the number of professionals on our register for five years or less since their initial registration grew by 358 (5.5%).

---



**The number of professionals in Wales who have been on our register between five and ten years grew from 5,392 in April to 5,578 in September.**

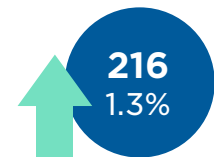


From April to September 2021, the number of professionals on our register between five and ten years grew by 120 (2.3%).

---



**The number of professionals in Wales who have been on our register between 10 and 30 years grew from 16,951 in April to 17,167 in September.**



From April to September 2021, the number of professionals on our register between 10 and 30 years grew by 222 (1.3%).

---



**The number of professionals in Wales who have been on our register for 30 years or more grew from 8,747 in April to 8,754 in September.**



From April to September 2021, the number of professionals on our register for 30 years or more fell by 93 (-1.1%).

**Of the 38,901 professionals on our register with an address in Wales:**

**87.5%** are White

**7.0%** are Asian

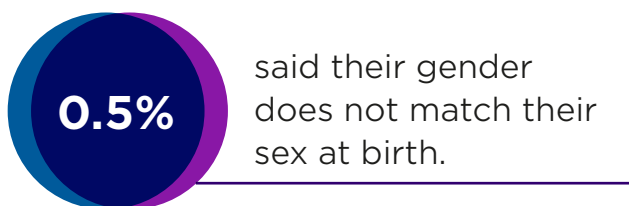
**2.3%** are Black

**0.7%** are mixed race

**0.5%** are other

**1.9%** preferred not to say

**0.2%** didn't declare.

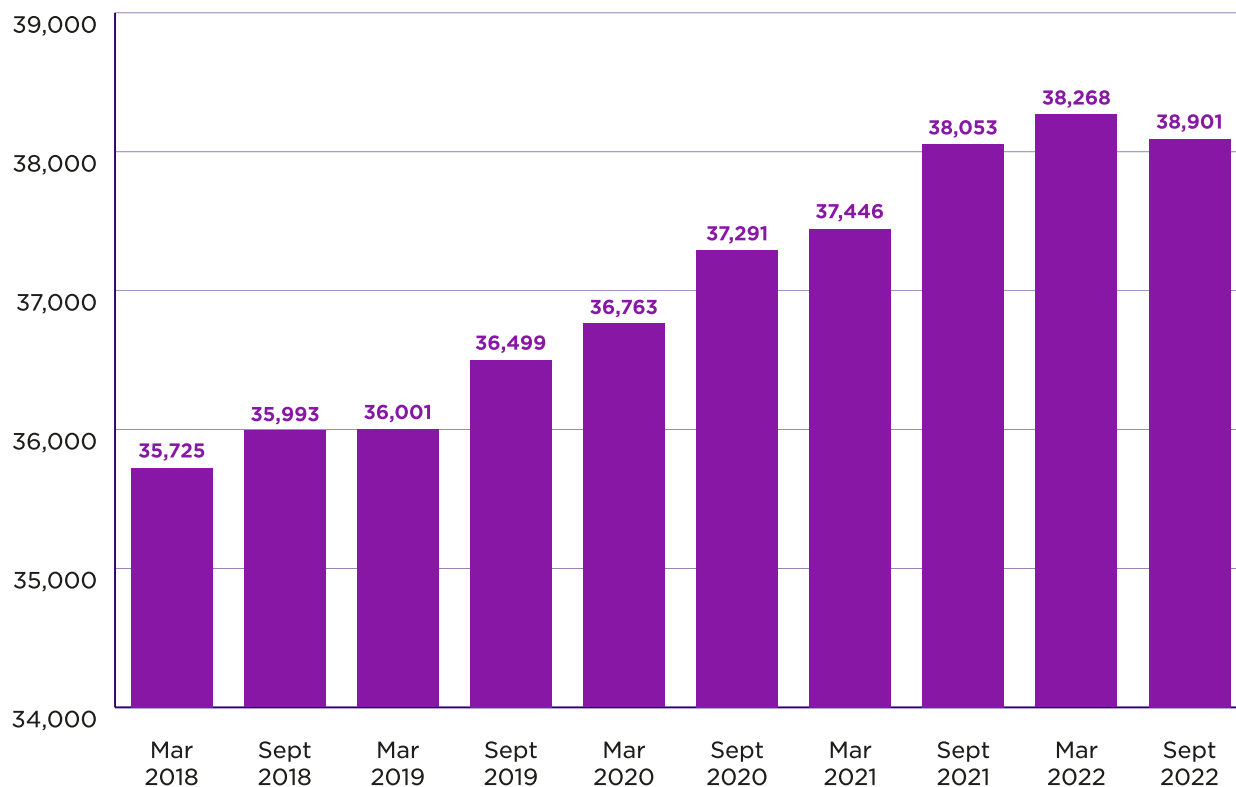


Due to rounding, proportions may not add up to 100 percent exactly.



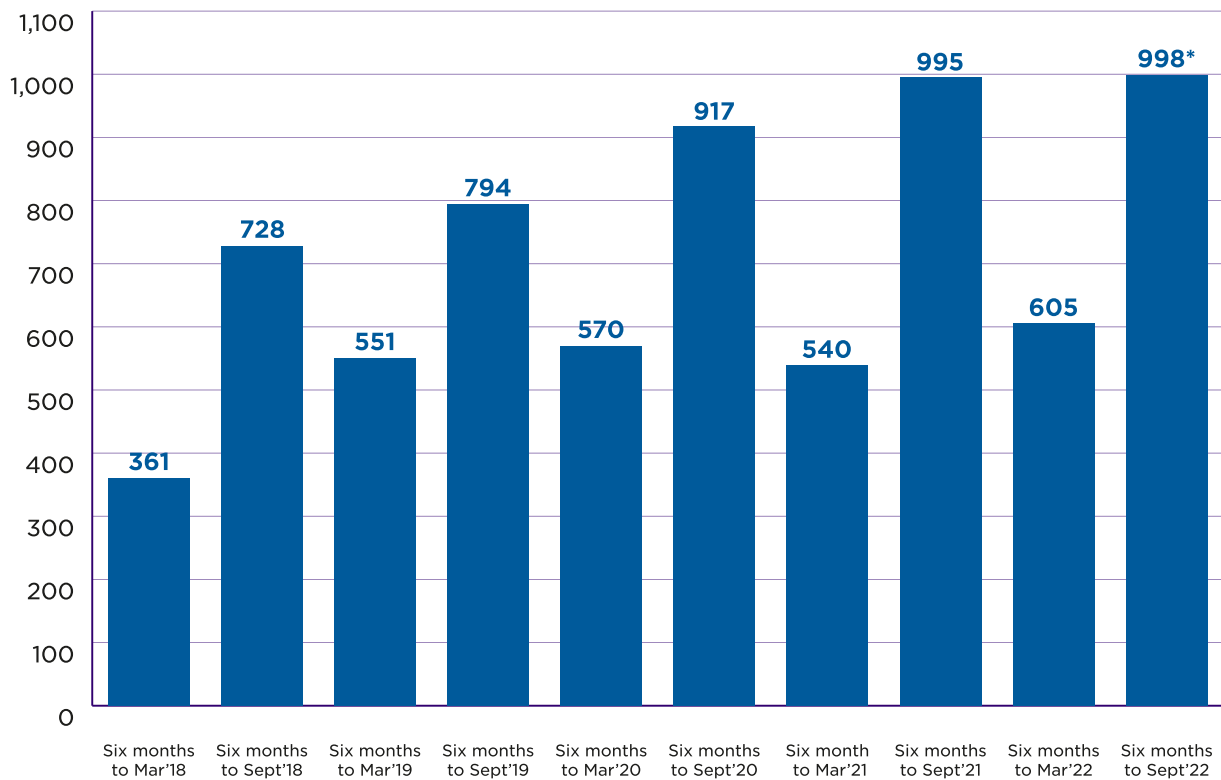
**Figure 1:**

Number of people on the permanent register with an address in Wales.



## Figure 2:

Number of people joining the permanent register for the first time with an address in Wales.

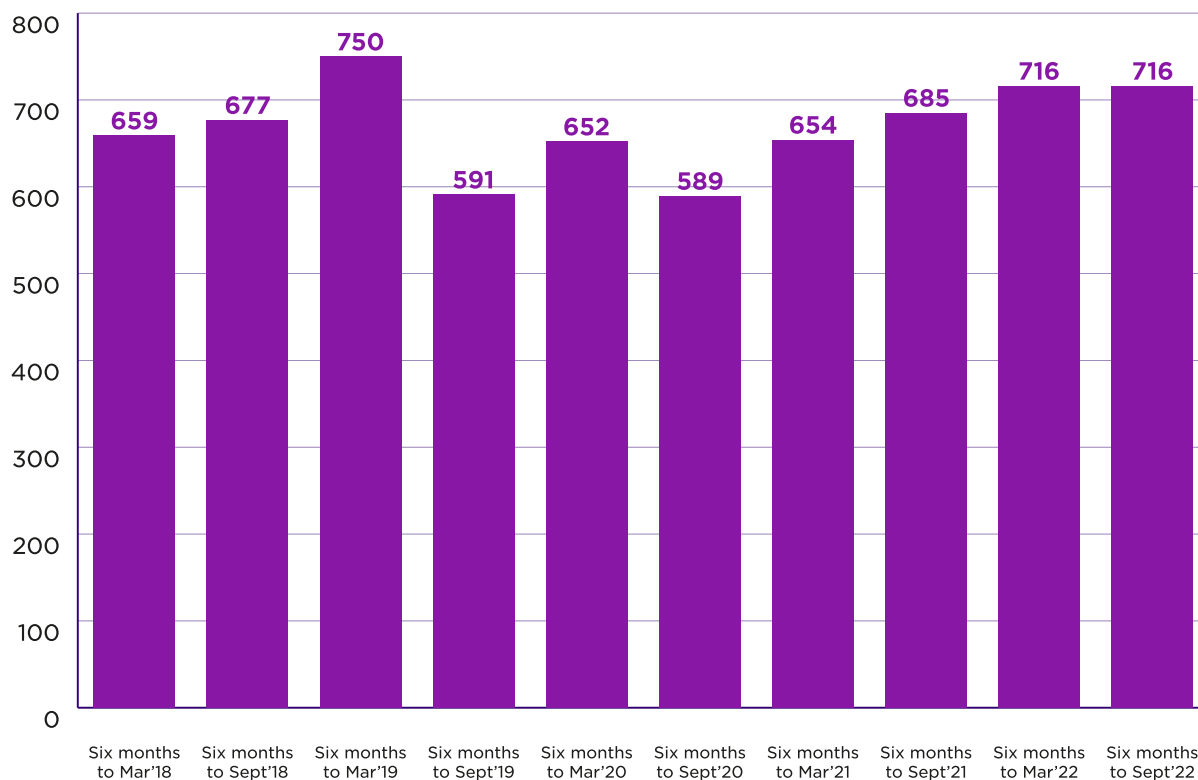


\*Of the 998 joiners in Wales in the six months to September 2022, 85 had been on the Covid-19 temporary register.



### Figure 3:

Number of people leaving the permanent register with an address in Wales.



The data in this report is based on the registered addresses of the professionals on our register.

Joiners' data doesn't include those re-joining the register having previously left. Also, the overall number on the register is from one point in time, whereas the joiners' and leavers' data are the sum of activity over six months. Therefore, these figures won't add up exactly.

---

# Covid-19 temporary register in Wales

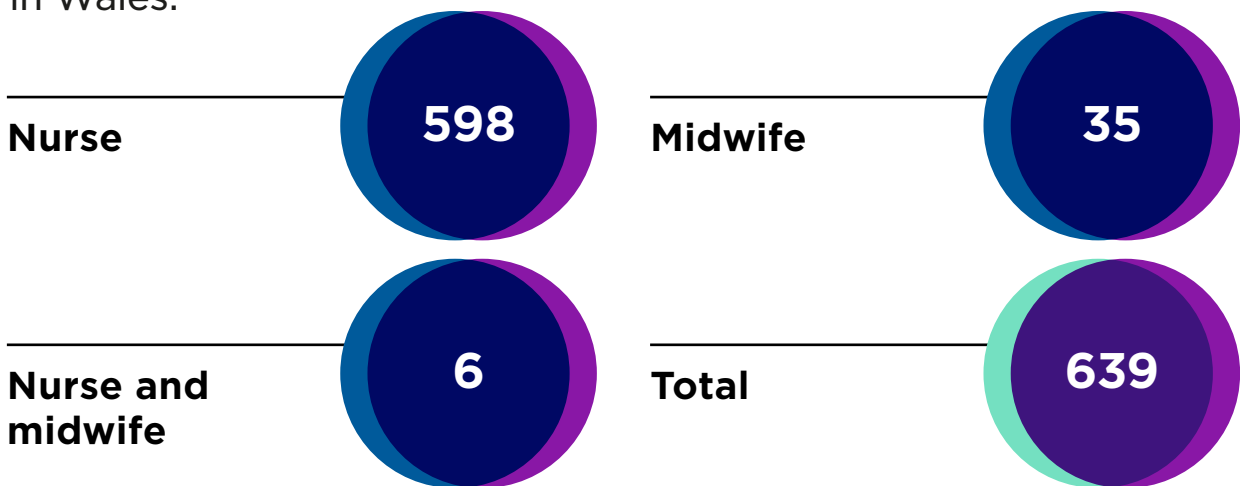
**In March 2020 we established a Covid-19 temporary register to support the UK's response to the coronavirus pandemic.**

We invited nurses and midwives who had left our permanent register within the last five years to join. We also invited overseas applicants who had completed all parts of their NMC registration process except their OSCE (objective structured clinical examination).

The data below is taken at 30 September 2022 – the same as the data from our permanent register above in this report. For clarity, data from the Covid-19 temporary register is not included in figures 1-3 above.

**Figure 4:**

Total people on the Covid-19 temporary register with an address in Wales.



Between April and September, 85 people in Wales left the Covid-19 temporary register to join the permanent register.

These numbers don't include people who are already registered with us moving to Wales, or people returning to the register.

The data in this report is based on the registered addresses of the professionals on our register.



---

**Our vision is safe, effective and kind nursing and midwifery practice that improves everyone's health and wellbeing.**

As the independent regulator of more than 771,000 nursing and midwifery professionals, we have an important role to play in making this a reality.

**nmc**  
**Nursing &  
Midwifery  
Council**

23 Portland Place,  
London W1B 1PZ  
+44 20 7637 7181  
[www.nmc.org.uk](http://www.nmc.org.uk)

 @nmcnews    @nmcuk

The nursing and midwifery regulator for England, Wales, Scotland and Northern Ireland  
Registered charity in England and Wales (1091434) and in Scotland (SC038362)