

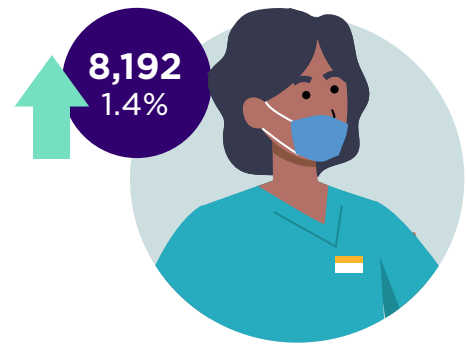
The NMC register England mid-year update

1 April – 30 September 2022



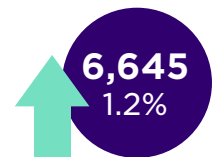
The number of nurses, midwives and nursing associates on our register in England grew from 591,451 at the beginning of April to 599,643 at the end of September.

The number of professionals in England grew by 6,838 (1.2%) during the same period the previous year, April to September 2021.



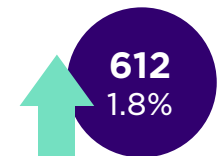
The number of nurses on our register in England grew from 546,008 in April to 552,653 in September.

From April to September 2021, the number of nurses grew by 5,246 (1.0%).



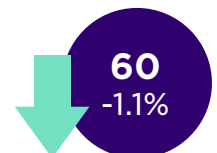
The number of midwives on our register in England grew from 33,119 in April to 33,731 in September.

From April to September 2021, the number of midwives grew by 485 (1.5%).



The number of dual registrants (people registered as both a nurse and midwife) in England fell from 5,478 in April to 5,418 in September.

From April to September 2021, the number of dual registrants fell by 45 (-0.8%).



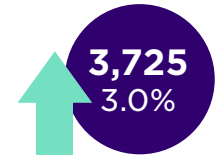
The number of nursing associates in England grew from 6,846 in April to 7,841 at the end of September.

From April to September 2021, the number of nursing associates in England grew by 1,152 (26.7%). The role was introduced in January 2019.





The number of professionals in England who have been on our register for five years or less since their initial registration grew from 125,965 in April to 129,690 in September.



From April to September 2021, the number of professionals on our register for five years or less since their initial registration grew by 1,251 (1.1%).



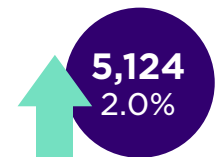
The number of professionals in England who have been on our register between five and ten years grew from 95,185 in April to 95,705 in September.



From April to September 2021, the number of professionals on our register between five and ten years grew by 3,080 (3.3%).



The number of professionals in England who have been on our register between 10 and 30 years grew from 261,481 in April to 266,605 in September.



From April to September 2021, the number of professionals on our register between 10 and 30 years grew by 3,774 (1.5%).



The number of professionals in England who have been on our register for 30 years or more fell from 108,698 in April to 107,533 in September.



From April to September 2021, the number of professionals on our register for 30 years or more fell by 1,263 (-1.1%).

Of the 599,643 professionals on our register with an address in England:

69.2% are White

13.2% are Asian

12.2% are Black

1.1% are mixed race

1.3% are other

2.6% preferred not to say

0.4% didn't declare.

88.9%

identified as female

11.1%

identified as male

0.7%

said their gender does not match their sex at birth.

Due to rounding, proportions may not add up to 100 percent exactly.



Figure 1:

Number of people on the permanent register with an address in England.

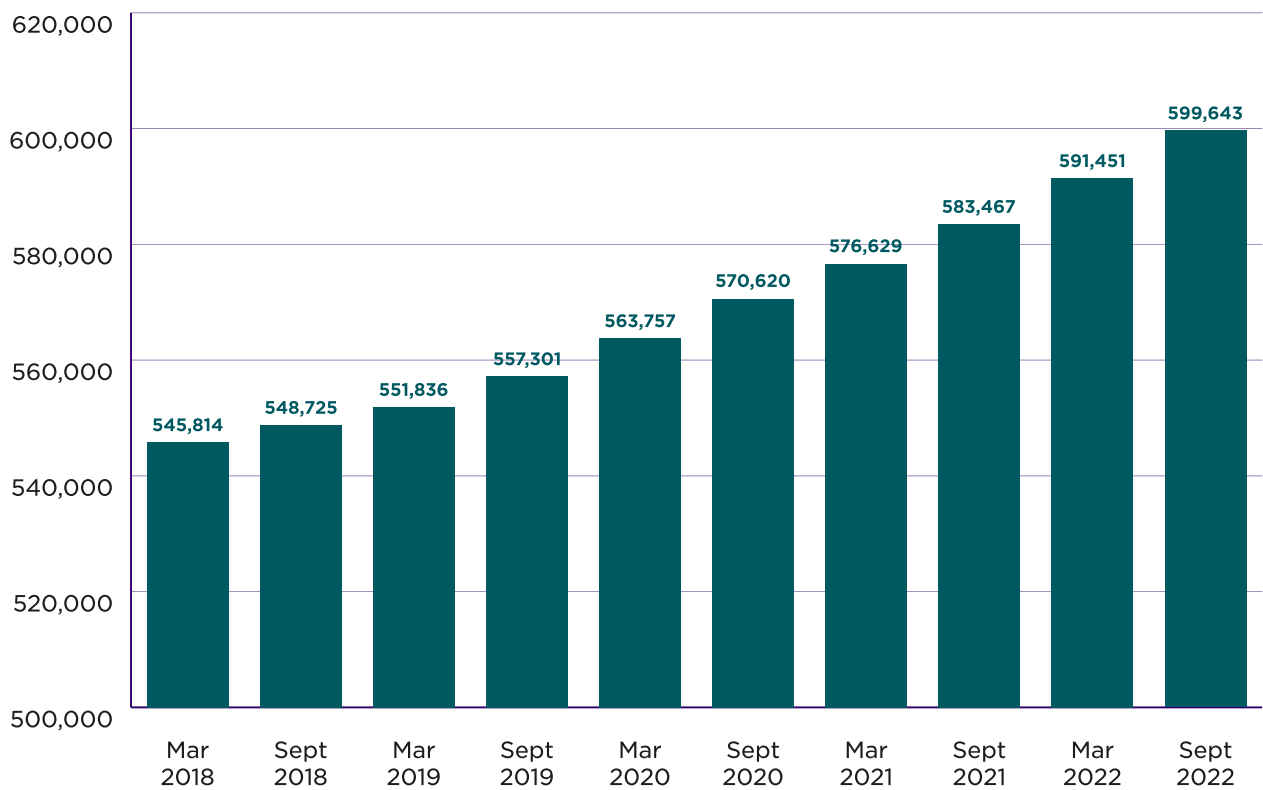
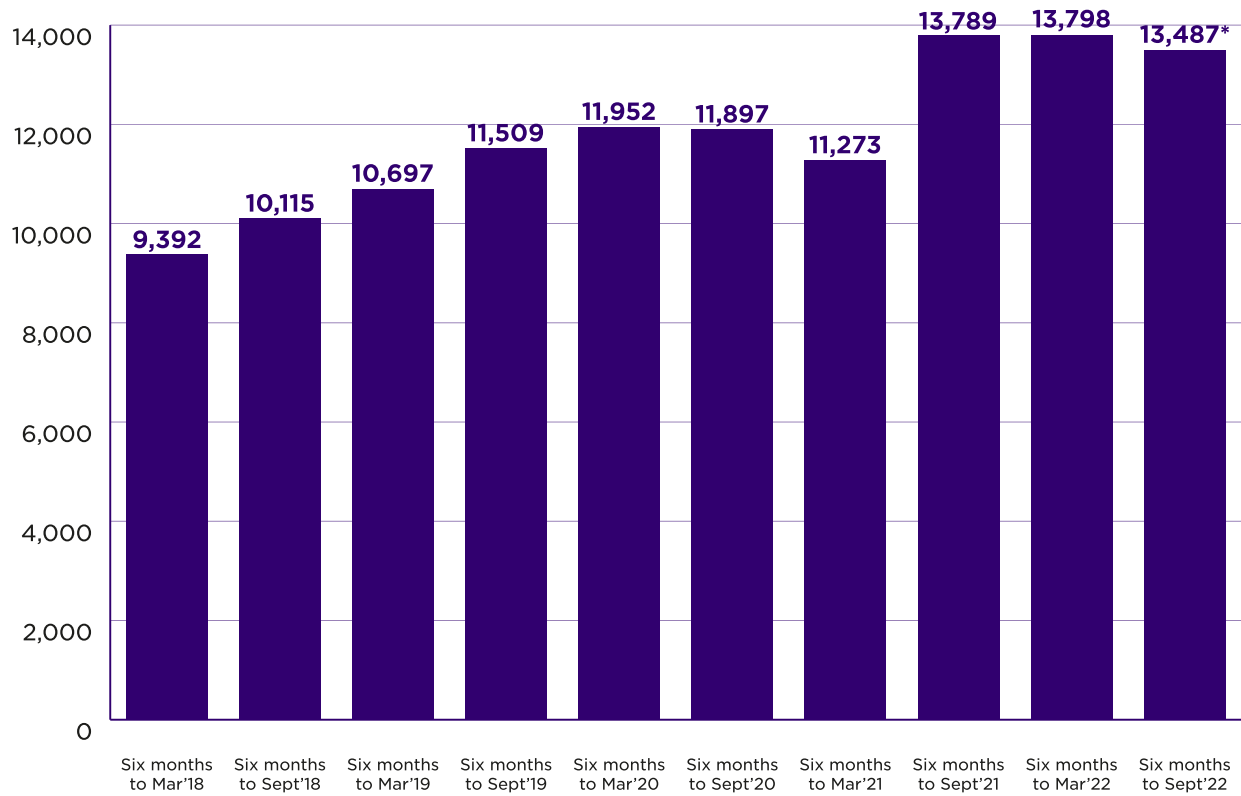


Figure 2:

Number of people joining the permanent register for the first time with an address in England.

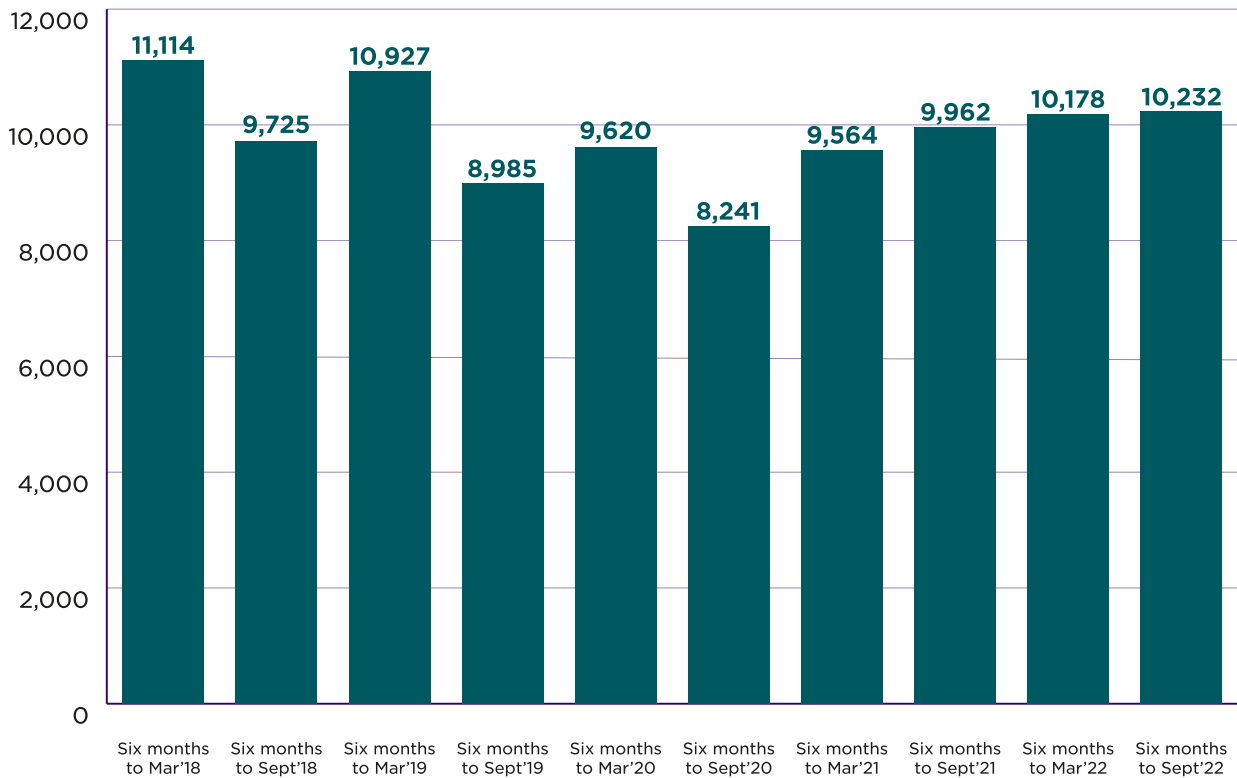


*Of the 13,487 joiners in England in the six months to September 2022, 957 had been on the Covid-19 temporary register.



Figure 3:

Number of people leaving the permanent register with an address in England.



The data in this report is based on the registered addresses of the professionals on our register.

Joiners' data doesn't include those re-joining the register having previously left. Also, the overall number on the register is from one point in time, whereas the joiners' and leavers' data are the sum of activity over six months. Therefore, these figures won't add up exactly.

Covid-19 temporary register in England

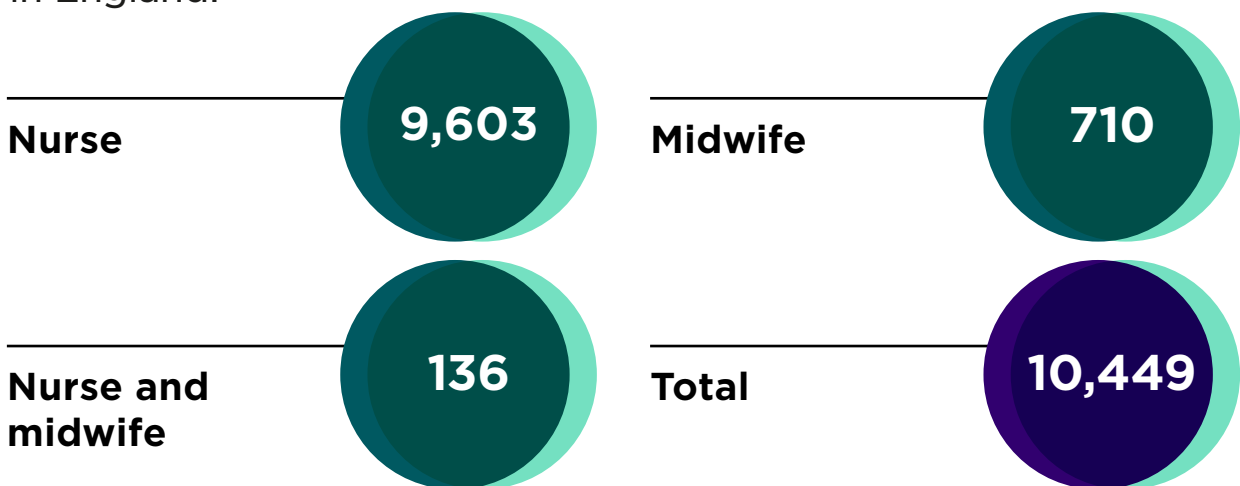
In March 2020 we established a Covid-19 temporary register to support the UK’s response to the coronavirus pandemic.

We invited nurses and midwives who had left our permanent register within the last five years to join. We also invited overseas applicants who had completed all parts of their NMC registration process except their OSCE (objective structured clinical examination).

The data below is taken at 30 September 2022 – the same as the data from our permanent register above in this report. For clarity, data from the Covid-19 temporary register is not included in figures 1-3 above.

Figure 4:

Total people on the Covid-19 temporary register with an address in England.



Between April and September, 957 people in England left the Covid-19 temporary register to join the permanent register.

These numbers don't include people who are already registered with us moving to England, or people returning to the register.

The data in this report is based on the registered addresses of the professionals on our register.

Our vision is safe, effective and kind nursing and midwifery practice that improves everyone's health and wellbeing.

As the independent regulator of more than 771,000 nursing and midwifery professionals, we have an important role to play in making this a reality.

nmc
**Nursing &
Midwifery
Council**

23 Portland Place,
London W1B 1PZ
+44 20 7637 7181
www.nmc.org.uk

 @nmcnews  @nmcuk

The nursing and midwifery regulator for England, Wales, Scotland and Northern Ireland
Registered charity in England and Wales (1091434) and in Scotland (SC038362)