

The NMC register mid-year update

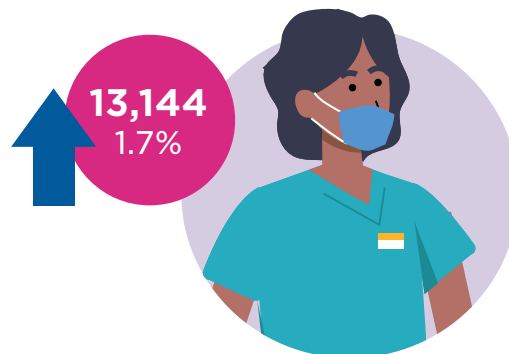
1 April – 30 September 2022



There are more than 771,000 people on our permanent register. This includes nurses and midwives eligible to practise in the UK, and nursing associates* eligible to practise in England.

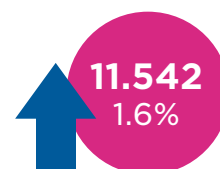
The number of nurses, midwives and nursing associates on our register grew from 758,301 at the beginning of April to 771,445 at the end of September.

Our register grew by 12,953 people (1.8%) during the same period the previous year, April to September 2021.



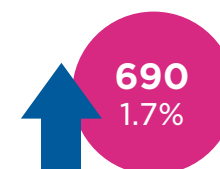
The number of nurses on our register grew from 704,518 in April to 716,060 in September.

From April to September 2021 the number of nurses grew by 11,273 (1.7%).



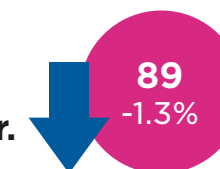
The number of midwives on our register grew from 40,165 in April to 40,855 in September.

From April to September 2021 the number of midwives grew by 594 (1.5%).



The number of dual registrants (people registered as a nurse and midwife) fell from 6,744 in April to 6,655 in September.

From April to September 2021 the number of dual registrants fell by 70 (-1.0%).



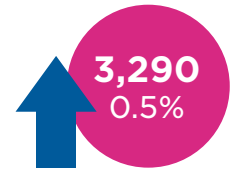
The number of nursing associates grew from 6,874 in April to 7,875 in September.

From April to September 2021 the number of nursing associates grew by 1,156 (26.7%).





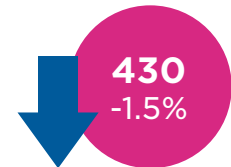
The number of professionals whose initial registration was in the UK grew from 615,858 in April to 619,148 in September.



From April to September 2021, the number of registered professionals whose initial registration was in the UK grew by 3,904 (0.6%).



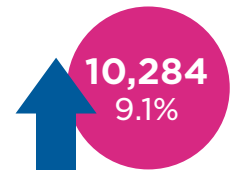
The number of professionals from the EU/EEA on our register fell from 28,864 in April to 28,434 in September.



From April to September 2021, the number of registered professionals from the EU/EEA fell by 911 (-3.0%).



The number of professionals from outside the EU/EEA grew from 113,579 to 123,863. There are now 43,136 who trained in the Philippines (an increase of 5.0%) and 42,570 who trained in India (an increase of 12.6%).




From April to September 2021, the number of professionals from outside the EU/EEA grew by 9,960 (10.8%).

Countries of training

Of all internationally trained professionals who joined our register in the six months to September 2022, India and the Philippines remain the two most common countries of training.

Active recruitment isn't permitted from 'red list' countries*, yet there are two - Nigeria and Ghana - in the ten most common countries of training for professionals joining our register. Compared to the same period last year there has been a 25.2% increase in professionals from Nigeria and a 61.6% increase from those from Ghana.

Table 1:
New joiners to the register - Top 10 countries of training

 No active recruitment is permitted from these countries.

| | Six months to Sept 2018 | Six months to Sept 2019 | | Six months to Sept 2020 | | Six months to Sept 2021 | | Six months to Sept 2022 | |
|---------------------|-------------------------|-------------------------|---------|-------------------------|--------|-------------------------|----------|-------------------------|---------|
| India | 762 | 1,768 | +132% | 1,122 | -36.5% | 4,436 | +295.4% | 4,863 | +9.6% |
| Philippines | 1,521 | 1,783 | +17.2% | 545 | -69.4% | 3,040 | +457.8% | 2,378 | -21.8% |
| Nigeria | 111 | 251 | +126.1% | 118 | -53% | 1,334 | +1030.5% | 1,670 | +25.2% |
| Ghana | 22 | 78 | +254.5% | 46 | -41% | 336 | +630.4% | 543 | +61.6% |
| Zimbabwe | 77 | 67 | -13.0% | 51 | -23.9% | 463 | +807.8% | 389 | -16% |
| Kenya | 13 | 22 | +69.2% | 16 | -27.3% | 164 | +925% | 240 | +46.3% |
| Nepal** | 19 | 20 | +5.3% | 14 | -30% | 102 | +628.6% | 132 | +29.4% |
| Hong Kong | 2 | 5 | +150% | 1 | -80% | 22 | +2100% | 84 | +281.8% |
| Republic of Ireland | 73 | 66 | -9.6% | 71 | 7.6% | 62 | -12.7% | 76 | +22.6% |
| Guyana | 3 | 24 | +700% | 7 | -70.8% | 41 | +485.7% | 75 | +82.9% |

*The Department of Health and Social Care (DHSC) has a recently updated [Code of practice for the international recruitment of health and social care personnel in England](#). The Code prohibits active recruitment from 'red list' countries designated by the World Health Organisation. The Code does not prevent individual health workers from 'red list' countries from seeking employment independently, but employers should not be actively recruiting from those countries.

**Very limited active recruitment is permitted under the terms of a bilateral agreement between the UK and Nepal governments that was agreed in August 2022.

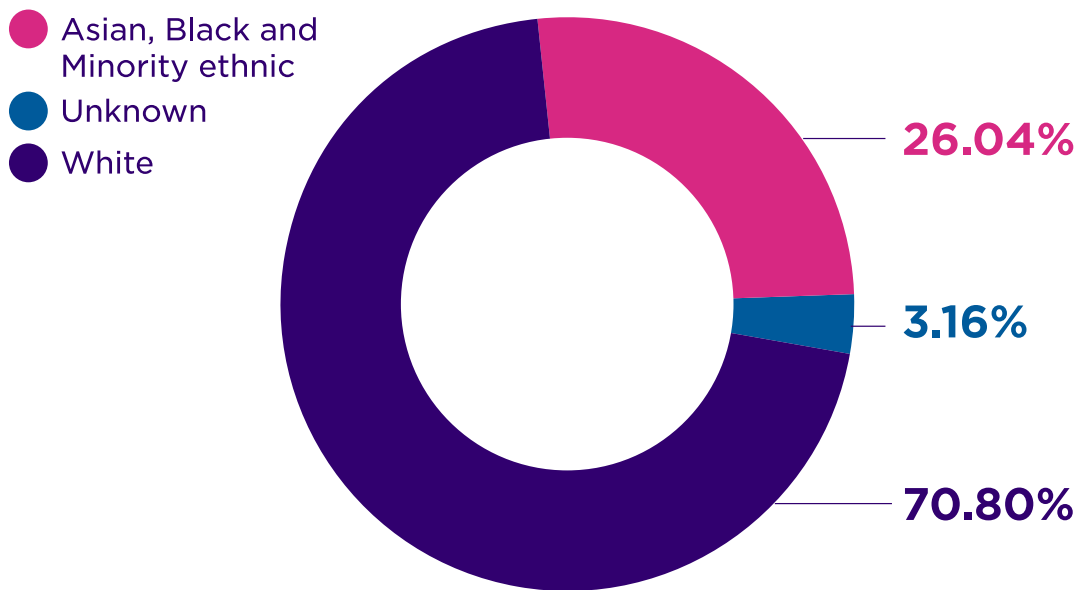
Profile of the permanent register

Ethnicity

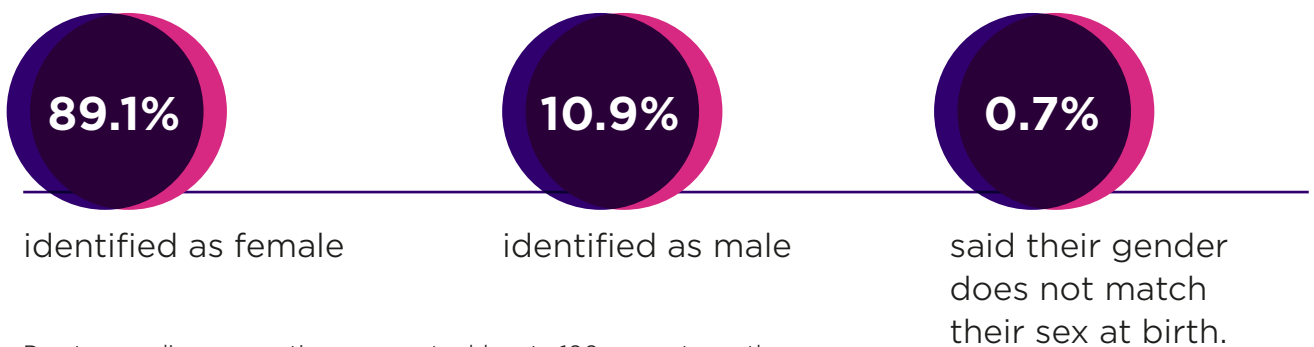
Of the 771,445 professionals on our register:

70.80% are White **1.12%** are other
13.48% are Asian **2.58%** preferred not to say
10.46% are Black **0.58%** didn't declare.
0.98% are mixed race

Figure 1:
Ethnicity profile of the permanent register



Gender



Due to rounding, proportions may not add up to 100 percent exactly.

Age

The number of those aged 21 to 40 grew by 10,516 (3.4%) to a total of 322,318.

The number of people aged 41 to 55 fell by 750 (-0.3%) to a total of 284,666.

The number of professionals aged 56 and above grew by 3,328 (2.1%) to a total of 164,383.

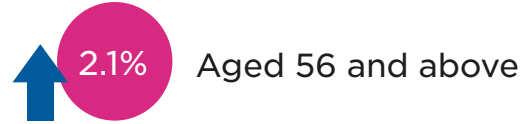
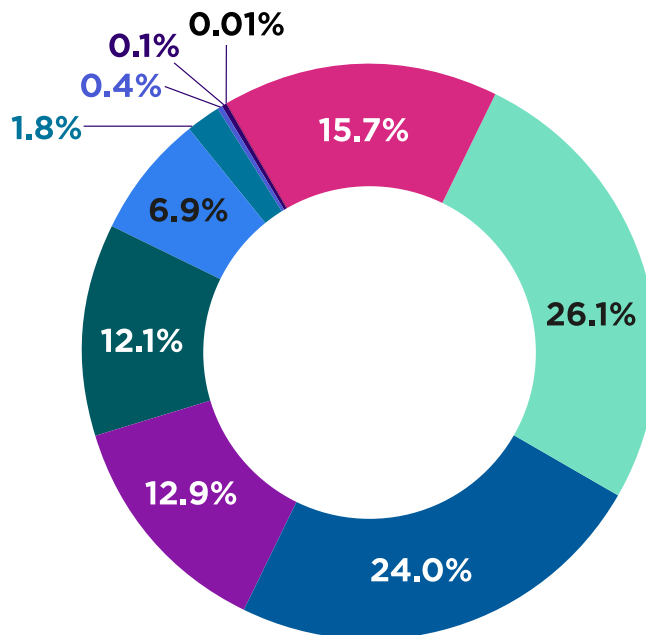


Figure 2:

Age profile of the permanent register

Age

- Below 21
- 21-30
- 31-40
- 41-50
- 51-55
- 56-60
- 61-65
- 66-70
- 71-75
- Over 75



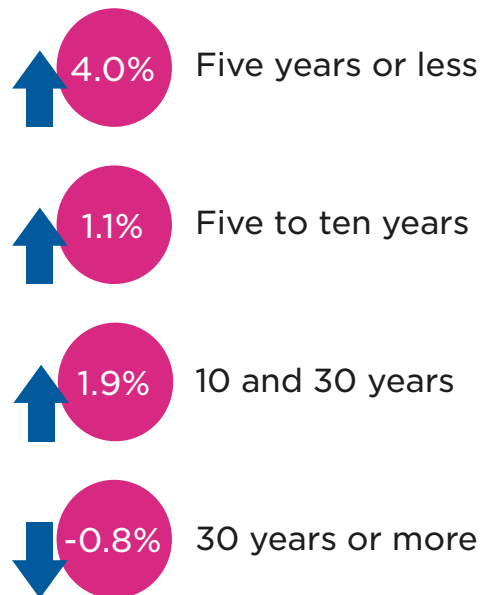
Due to rounding, proportions may not add up to 100 percent exactly.

Length of time on the register

The number of professionals who have been on our register for five years or less since their initial registration grew by **6,991 (4.0%)** to a total of **180,357**.

The number of those on the register between five and ten years grew by 1,255 (1.1%) to a total of 118,880. The number of those on the register between 10 and 30 years grew by 6,091 (1.9%) to a total of 331,010.

The number of people on the register for 30 years or more, fell by 1,181 (-0.8%) to a total of 141,057.

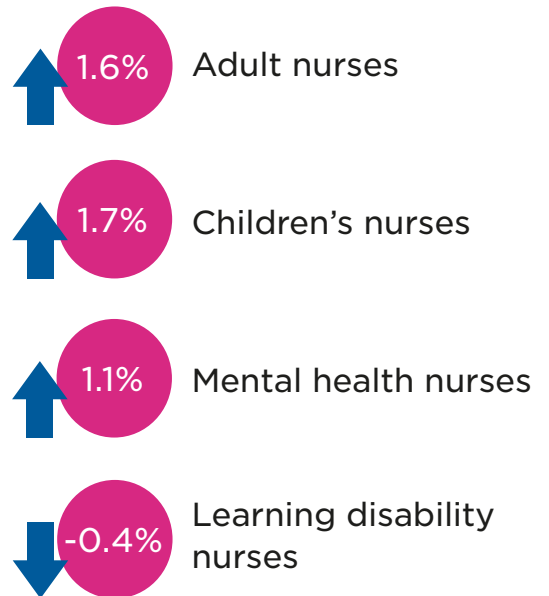


Fields of nursing practice

In the four fields of nursing practice, the number of adult nurses grew from **567,291 to 576,228 (1.6%)** between April and September.

The number of children's nurses grew from 55,062 to 56,010 (1.7%), and the number of mental health nurses grew from 92,780 to 93,800 (1.1%).

There was a slight decrease in the number of learning disability nurses from 16,953 to 16,881 (-0.4%).



SCPHN and specialist practice qualifications

The number of specialist community public health nurses (SCPHN) on our register fell from 29,862 in April to 29,649 in September (-0.7%).

The combined number of all the community specialist practice qualifications (SPQ) fell from 18,570 in April to 18,426 in September (-0.8%).

The number of prescriber SPQs grew from 95,341 to 97,970 (2.8%). The total number of specialist practice qualifications issued to professionals grew from 126,843 to 129,095 (1.8%).

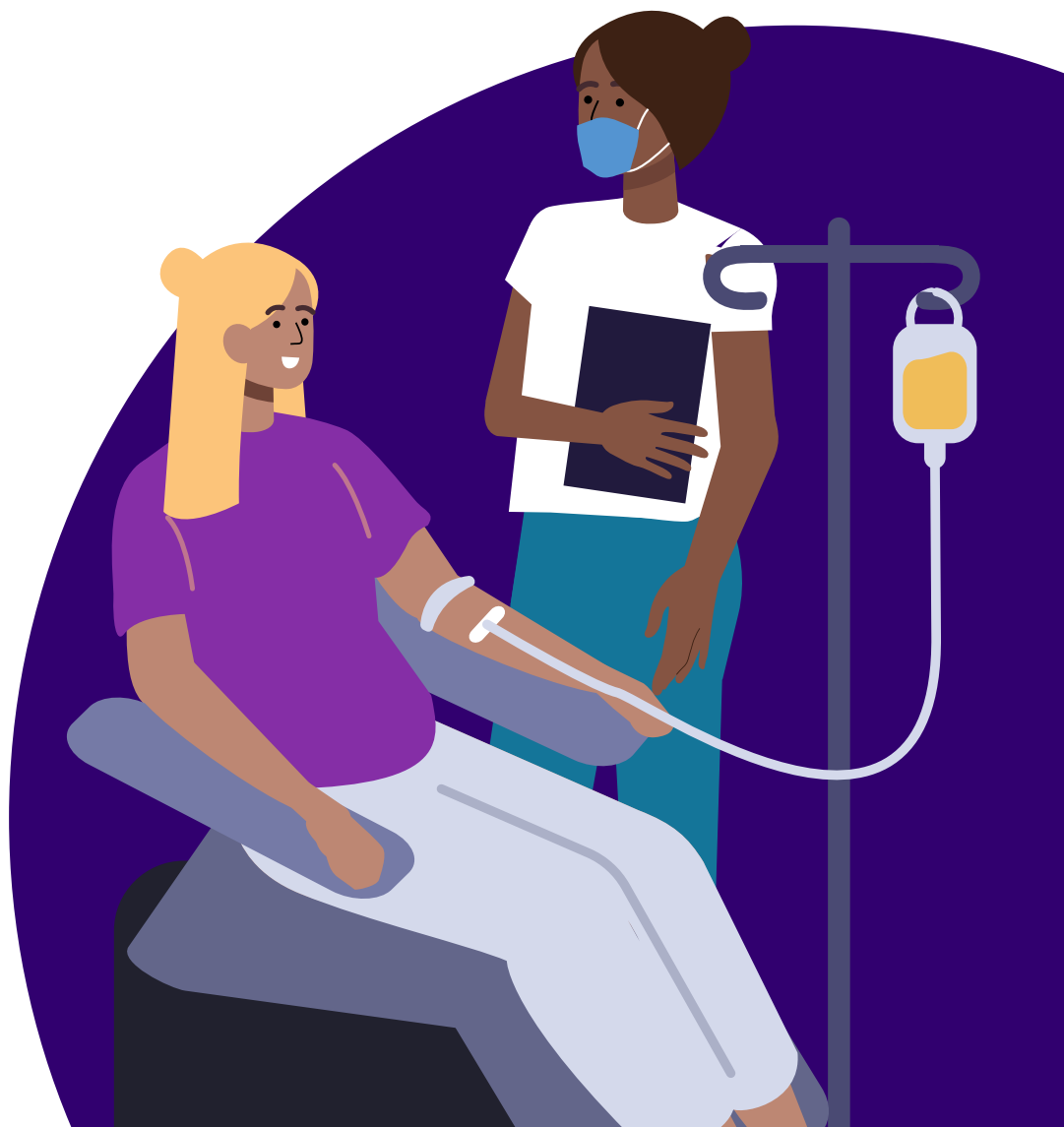
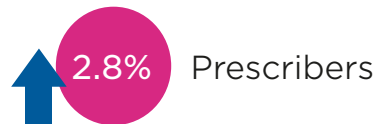
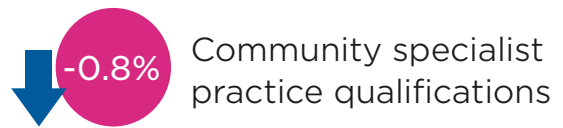
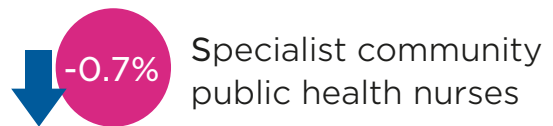


Figure 3:

Number of nurses, midwives and nursing associates on the permanent register.

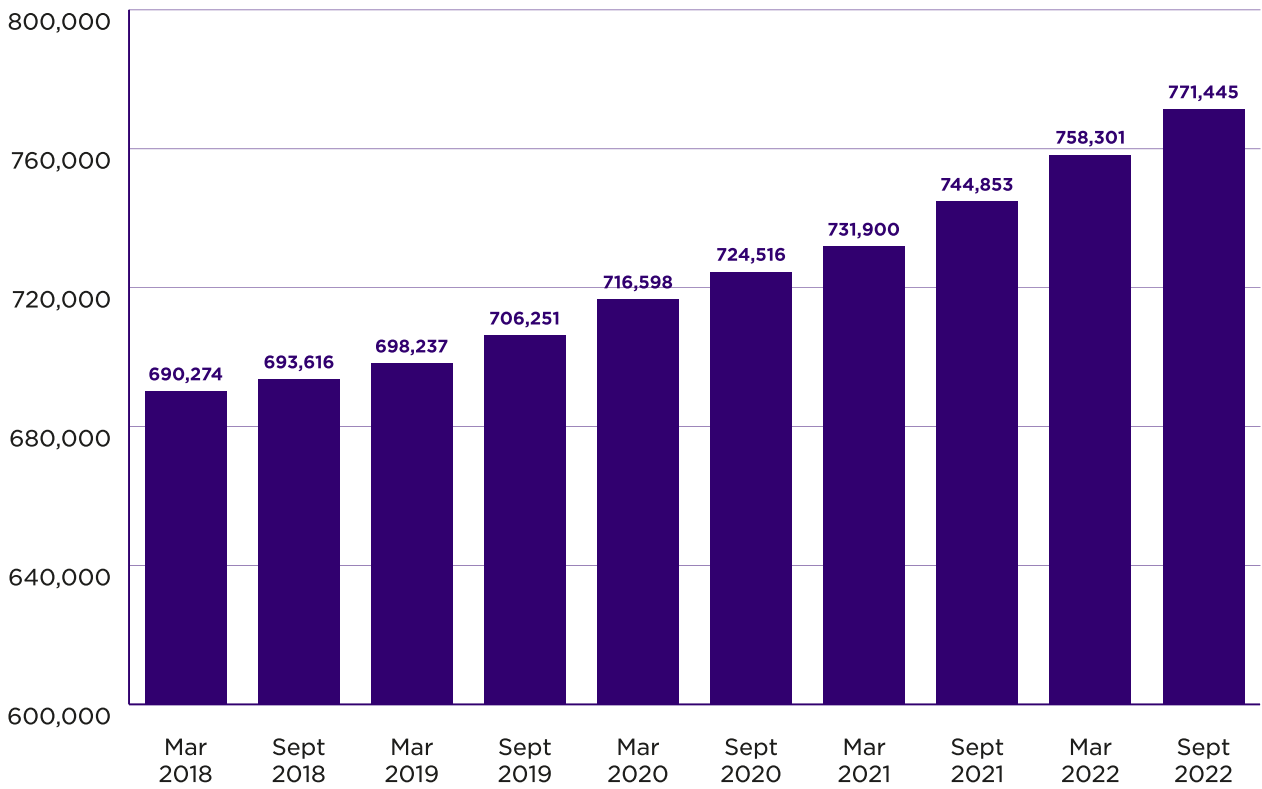
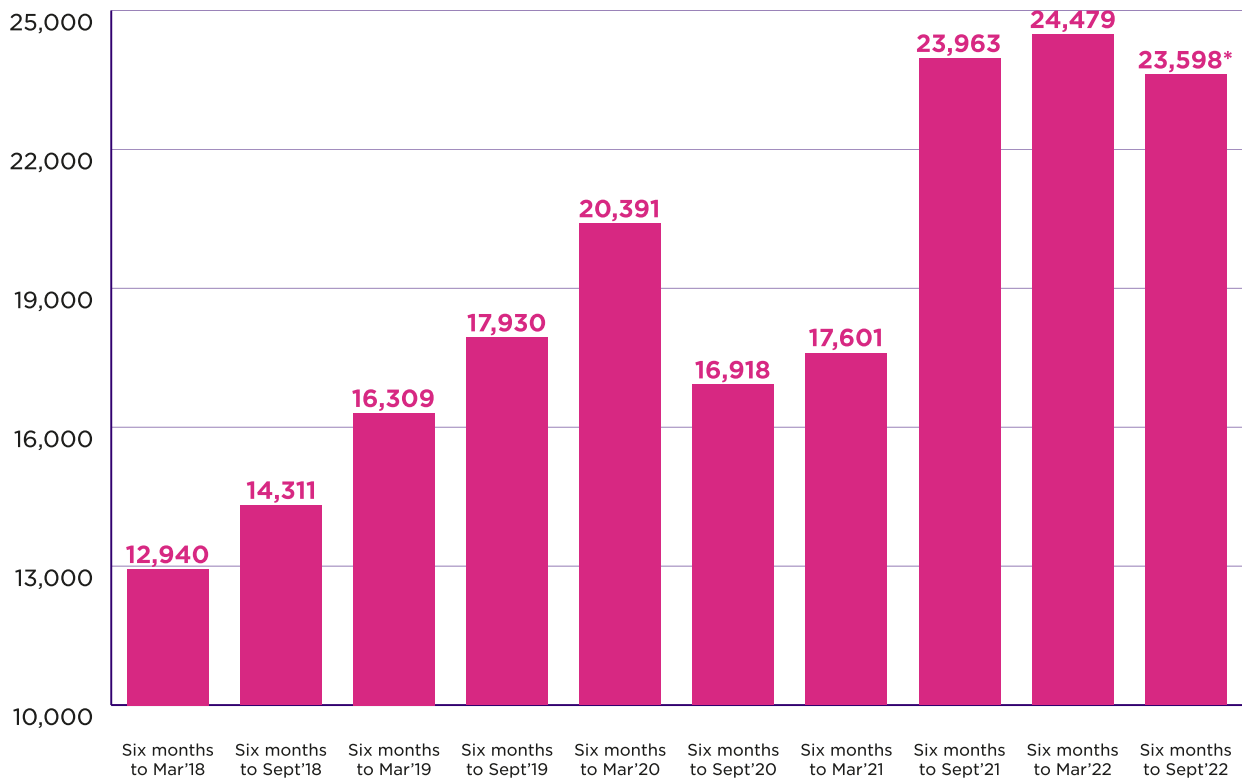


Figure 4:

Number of nurses, midwives and nursing associates joining the permanent register for the first time.



*Of the 23,598 joiners in the six months to September 2022, 1,190 had been on the Covid-19 temporary register.



Figure 5:

Number of nurses, midwives and nursing associates leaving the permanent register.

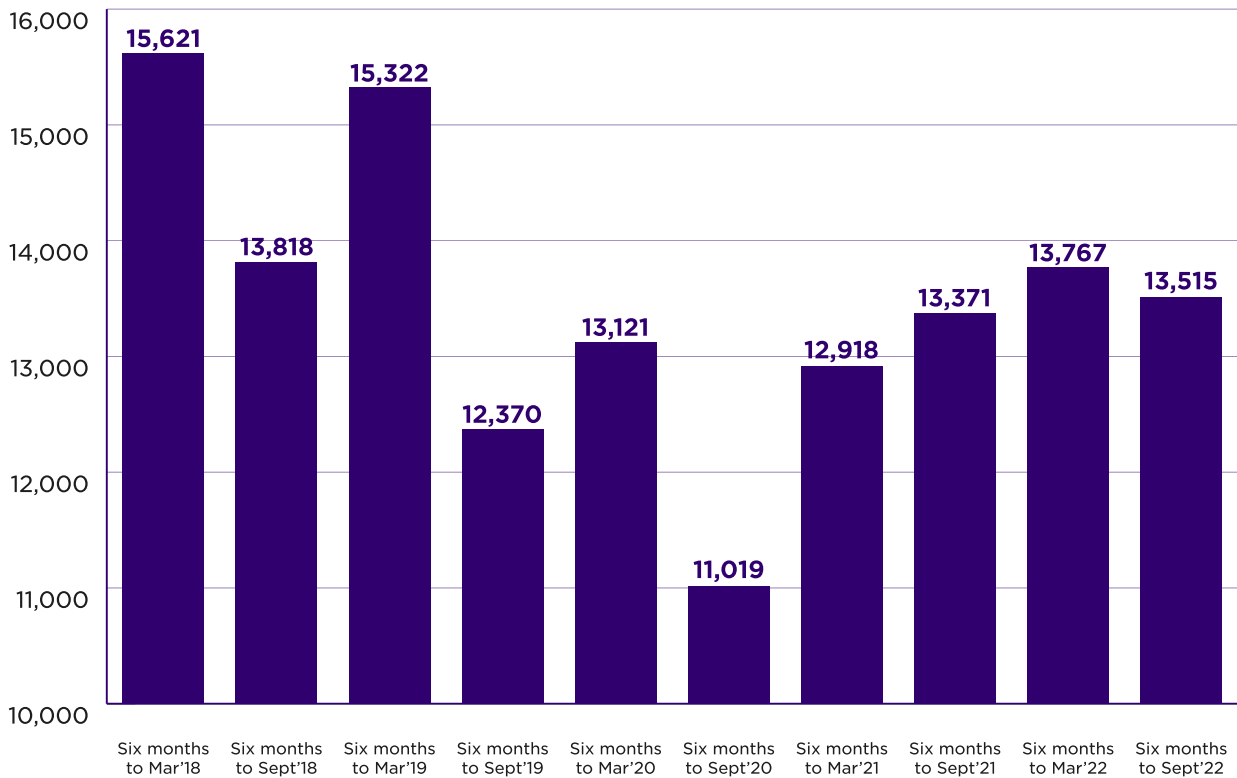


Figure 6:

Number of nurses, midwives and nursing associates from the UK joining the permanent register for the first time.

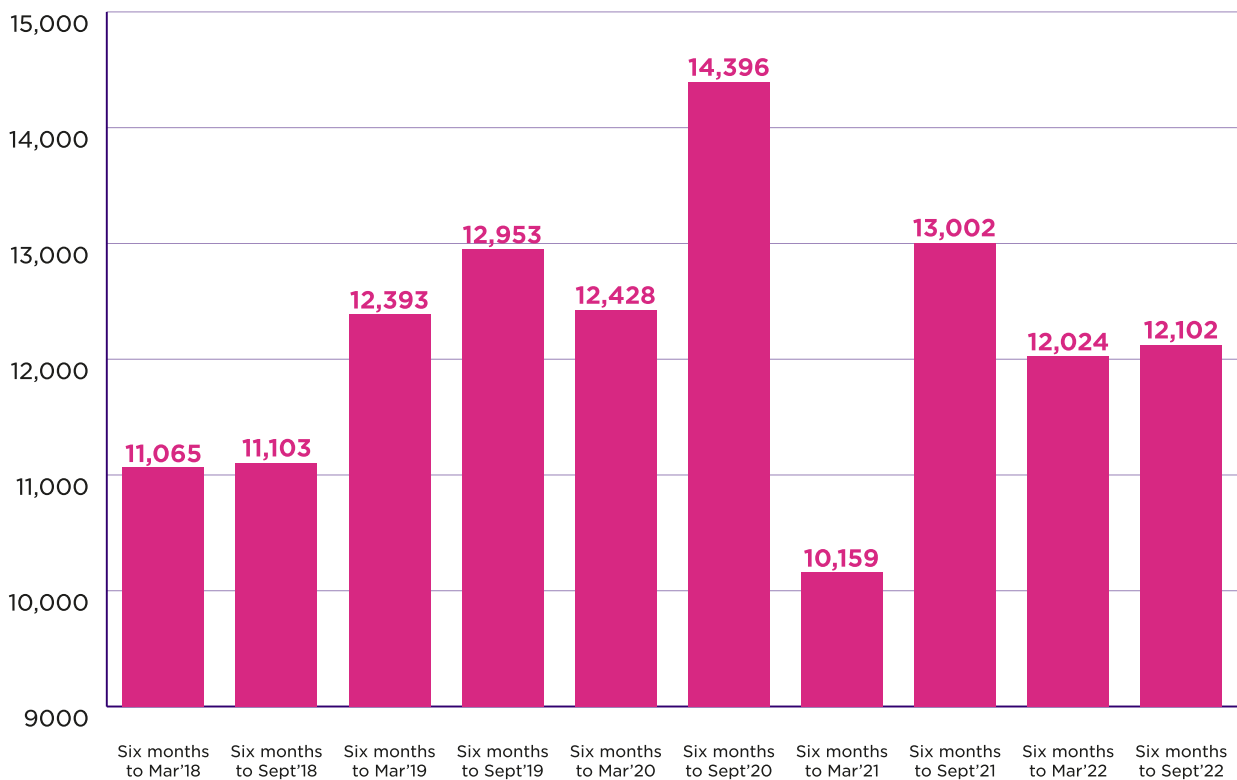


Figure 7:

Number of nurses, midwives and nursing associates from the EU/EEA joining the permanent register for the first time.

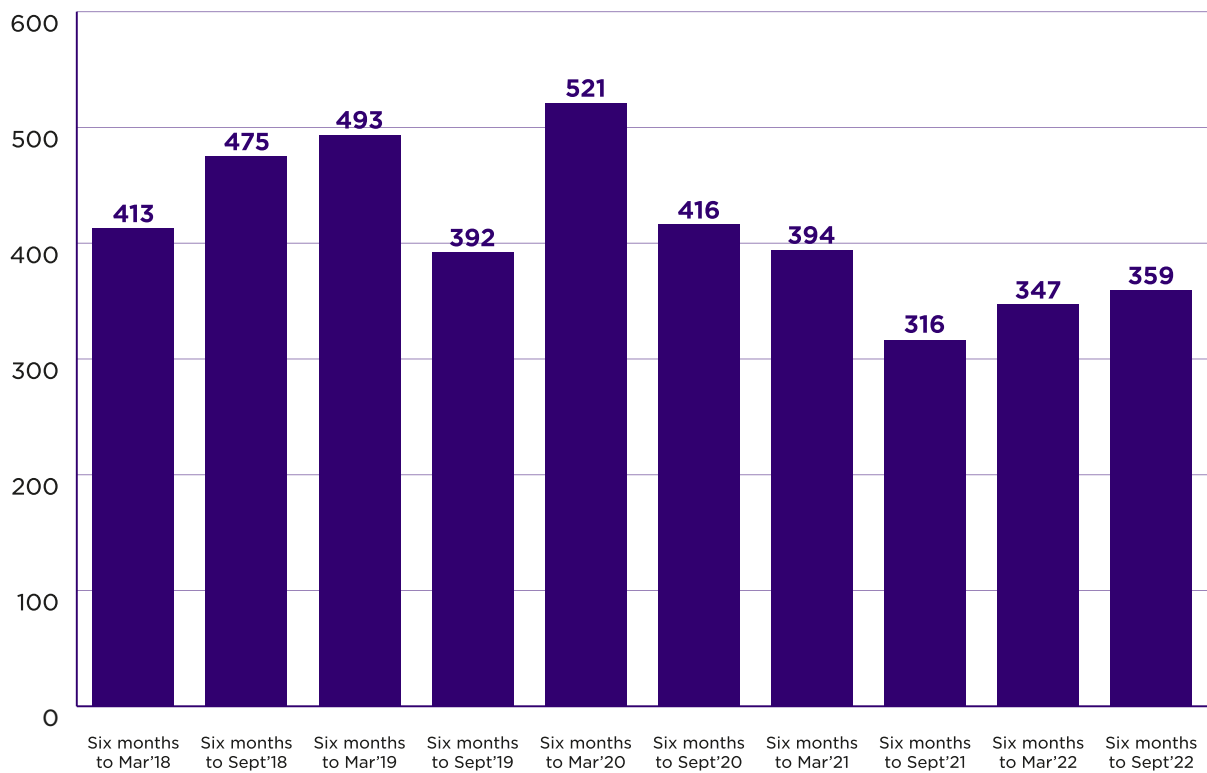
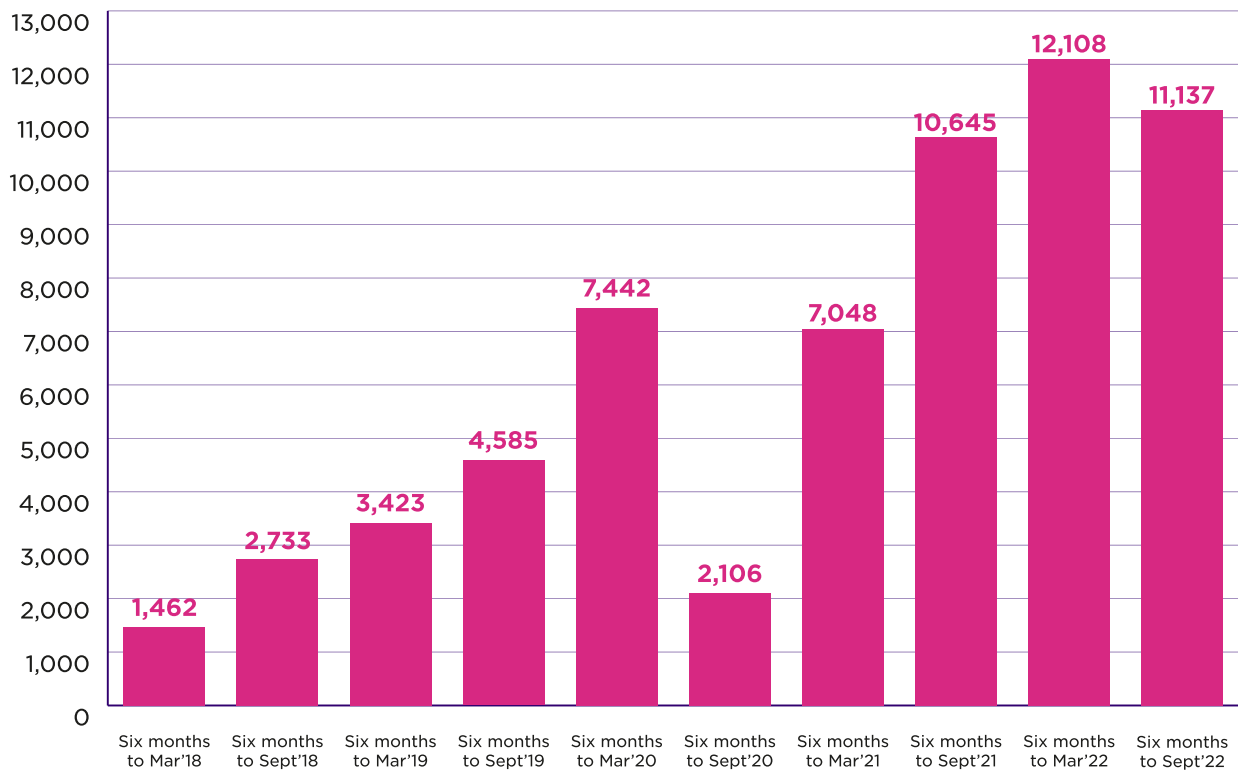


Figure 8:

Number of nurses, midwives and nursing associates from outside the EU/EEA joining the permanent register for the first time.



Joiners' data doesn't include those re-joining the register having previously left. Also, the overall number on the register is from one point in time, whereas the joiners' and leavers' data are the sum of activity over six months. Therefore, these figures won't add up exactly.

Covid-19 temporary register

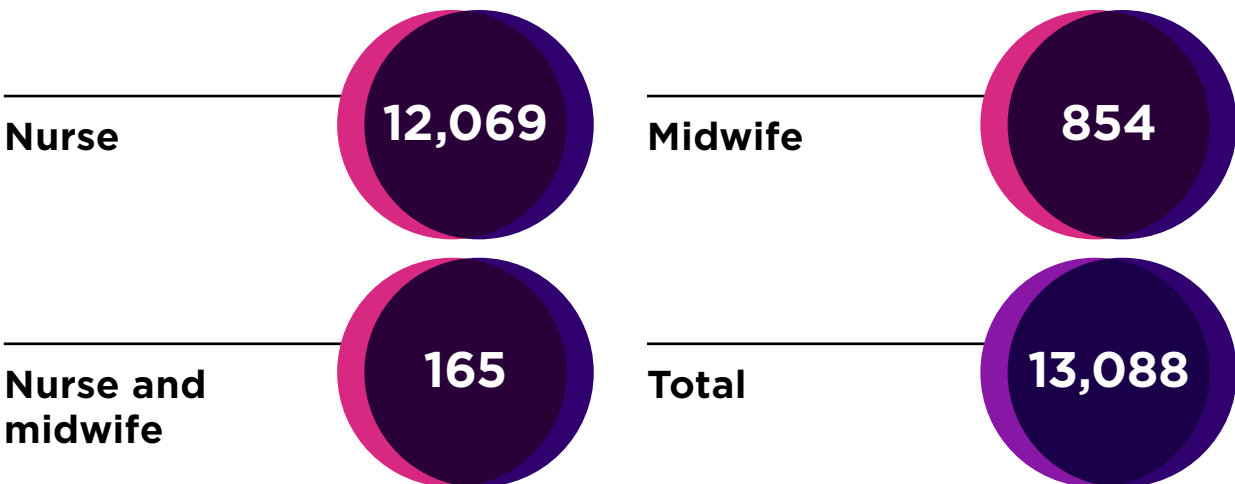
In March 2020 we established a Covid-19 temporary register to support the UK's response to the coronavirus pandemic.

We invited nurses and midwives who had left our permanent register within the last five years to join. We also invited overseas applicants who had completed all parts of their NMC registration process except their OSCE (objective structured clinical examination).

The data below is taken at 30 September 2022 - the same as the data from our permanent register above in this report. For clarity, data from the Covid-19 temporary register is not included in figures 1-8 above.

Figure 9:

Total people on the Covid-19 temporary register by registration type.



Between April and September, 1,190 people left the Covid-19 temporary register to join the permanent register.

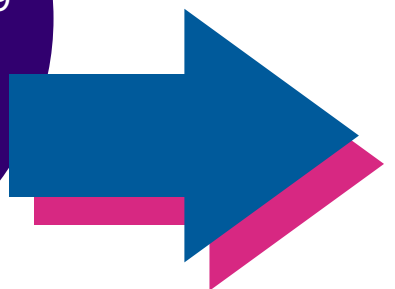


Table 2:

Total people on the Covid-19 temporary register by country of initial registration.

| | Nurse | Midwife | Nurse and midwife | Total |
|-------------------|---------------|------------|-------------------|---------------|
| England | 9,306 | 681 | 130 | 10,117 |
| Northern Ireland | 294 | 21 | 5 | 320 |
| Scotland | 1,446 | 89 | 18 | 1,553 |
| Wales | 474 | 29 | 7 | 510 |
| EU/EEA | 215 | 29 | 3 | 247 |
| Non-EU/EEA | 249 | 5 | 2 | 256 |
| Not yet recorded* | 85 | 0 | 0 | 85 |
| Total | 12,069 | 854 | 165 | 13,088 |

*Those listed as not yet recorded were overseas applicants undergoing full registration at the time who haven't yet reached the point in their submission where data regarding their country of initial registration is mandatory.



Table 3:

Age profile of the Covid-19 temporary register.

| Age | 30 September 2022 |
|---------|-------------------|
| 21-30 | 161 |
| 31-40 | 871 |
| 41-50 | 1,242 |
| 51-55 | 864 |
| 56-60 | 2,349 |
| 61-65 | 4,124 |
| 66-70 | 2,887 |
| 71-75 | 546 |
| Over 75 | 44 |

Table 4:

Gender profile of the Covid-19 temporary register.

| Role | Female | Male |
|-------------------|--------|-------|
| Nurse | 10,646 | 1,373 |
| Midwife | 852 | 2 |
| Nurse and midwife | 165 | 0 |

**Our vision is safe, effective and kind
nursing and midwifery practice that
improves everyone's health and wellbeing.**

As the independent regulator of more than
771,000 nursing and midwifery professionals,
we have an important role to play in making
this a reality.

nmc
**Nursing &
Midwifery
Council**

23 Portland Place,
London W1B 1PZ
+44 20 7637 7181
www.nmc.org.uk

 @nmcnews  @nmcuk

The nursing and midwifery regulator for England, Wales, Scotland and Northern Ireland
Registered charity in England and Wales (1091434) and in Scotland (SC038362)