

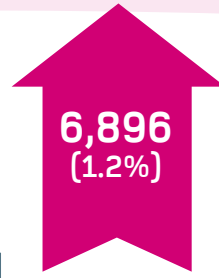
The NMC Register England Mid-year update

1 April–30 September 2021



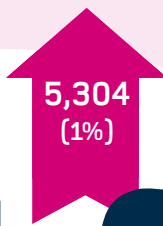
The number of nurses, midwives and nursing associates on our register in England grew from 576,645 at the beginning of April to 583,541 at the end of September.

In comparison, the number of professionals in England grew by 6,863 (1.2%) during the same period the previous year, April to September 2020.



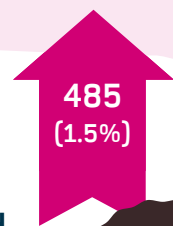
The number of nurses on our register in England grew from 534,486 in April to 539,790 in September.

From April to September 2020, the number of nurses grew by 5,091 (1.0%).



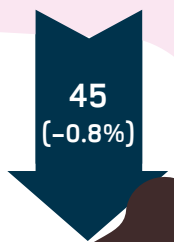
The number of midwives on our register in England increased from 32,183 in April to 32,668 in September.

From April to September 2020, the number of midwives increased by 759 (2.4%).



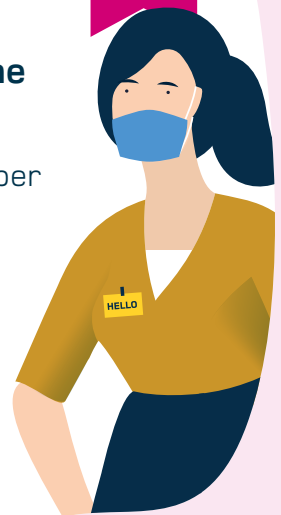
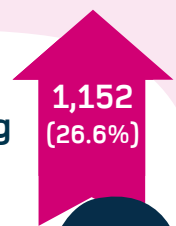
The number of dual registrants (people registered as both a nurse and midwife) in England decreased from 5,640 in April to 5,595 in September.

From April to September 2020, the number of dual registrants decreased by 2 (-0.03%).



The number of nursing associates in England grew from 4,336 in April to 5,488 at the end of September.

From April to September 2020, the number of nursing associates in England increased by 1,015 (60.6%). The role was introduced in January 2019.



This is a high level summary of our data. We have a more detailed version of this data available on our [website](#).

Figure 1

Number of people on the permanent register with an address in England.

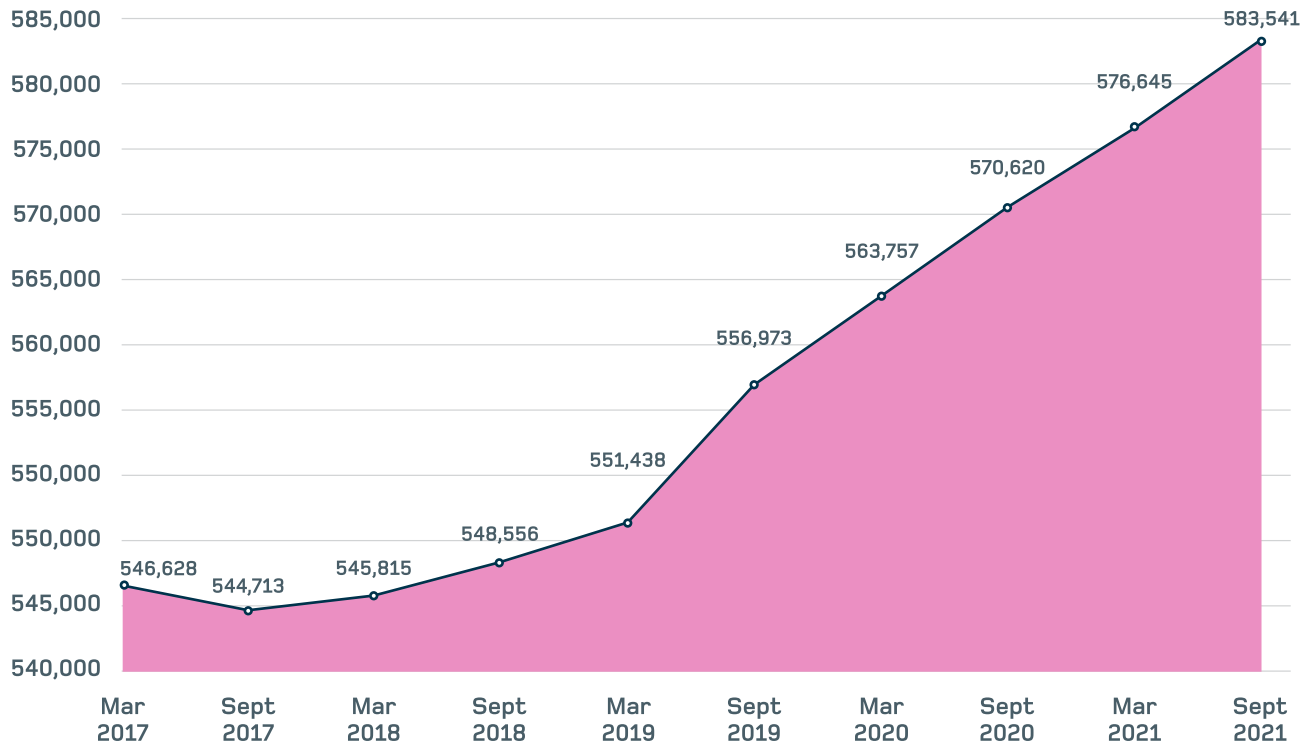
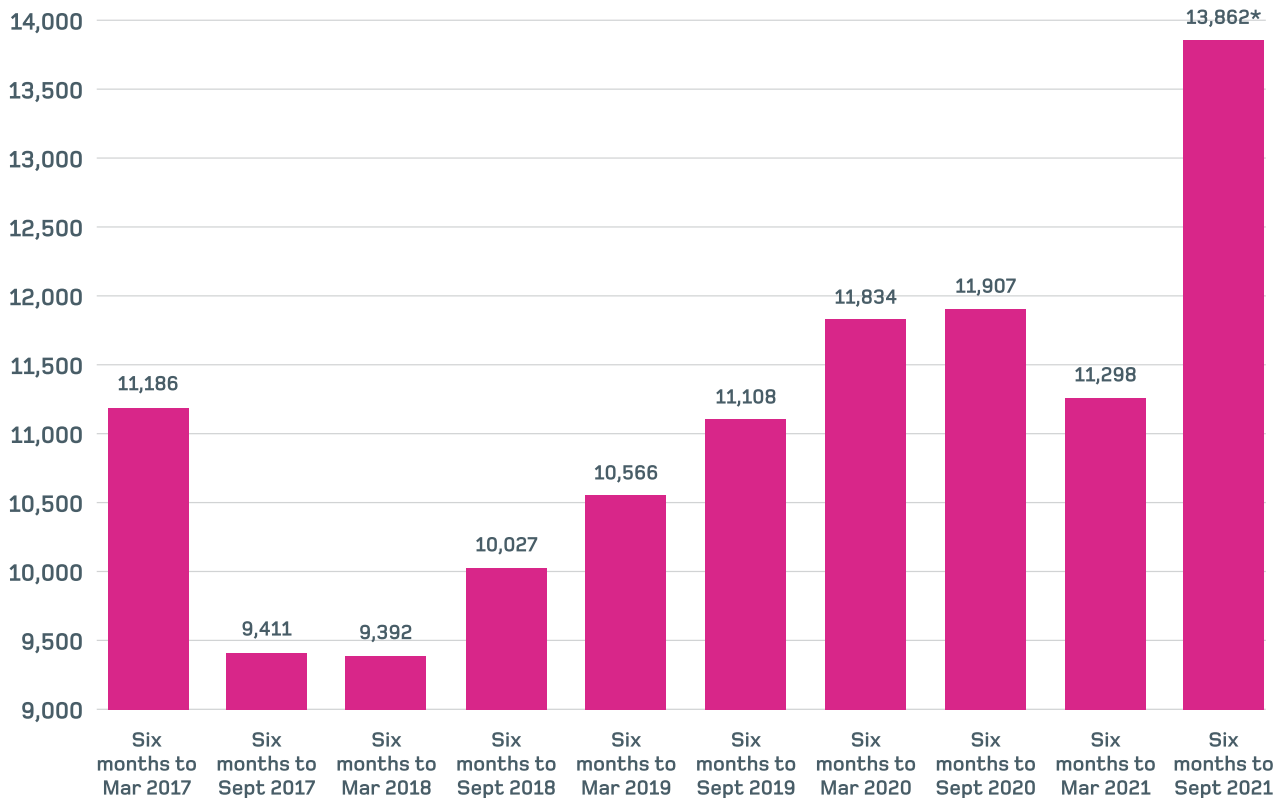


Figure 2

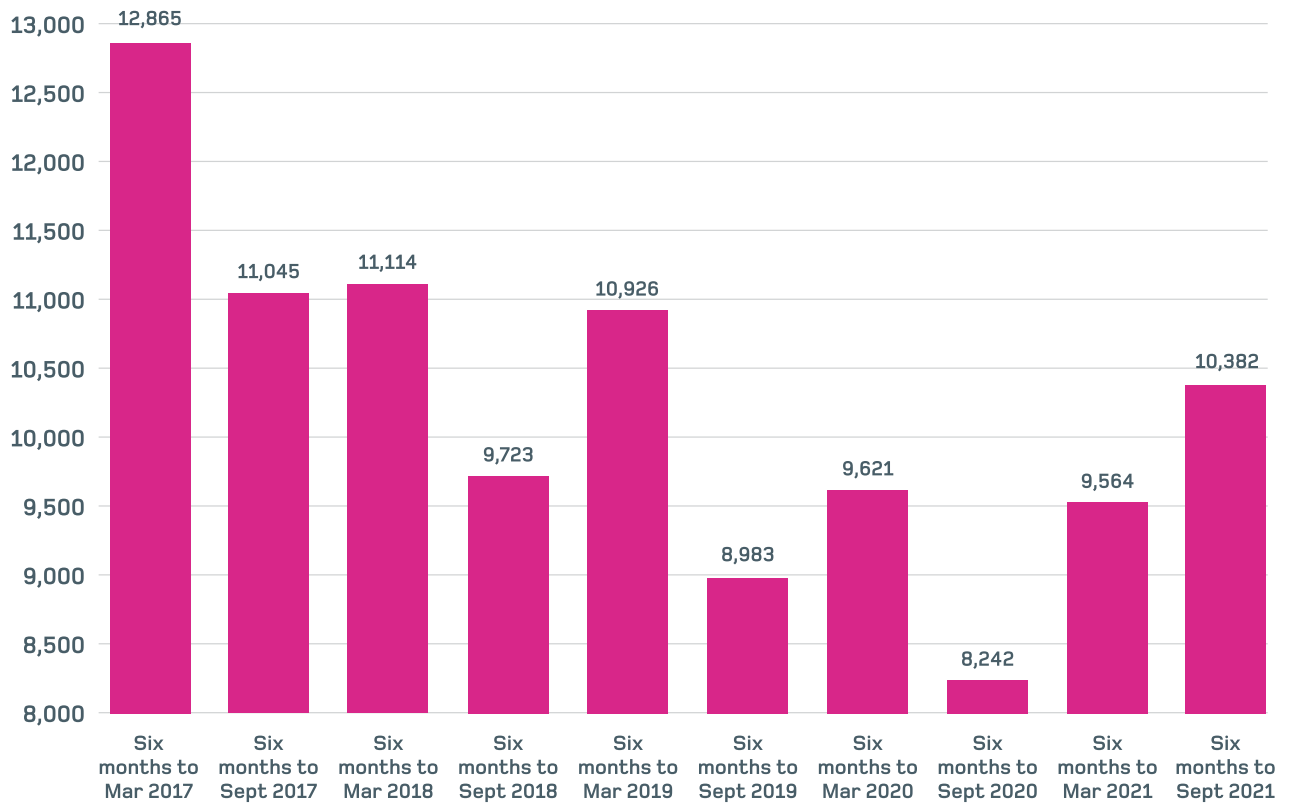
Number of people joining the permanent register for the first time with an address in England.



*Of the 13,862 joiners in England in the six months to September 2021, 1,157 had been on the Covid-19 temporary register. In the 12 months to March 2021, 3,595 people left the Covid-19 temporary register to join the permanent register.

Figure 3

Number of people leaving the permanent register with an address in England.



The data in this report is based on the registered addresses of the professionals on our register.

Joiners' data doesn't include those re-joining the register having previously left. Also, the overall number on the register is from one point in time, whereas the joiners' and leavers' data are the sum of activity over six months. Therefore, these figures won't add up exactly.



Covid-19 temporary register in England

In March 2020 we established a Covid-19 temporary register to support the UK's response to the coronavirus pandemic.

We invited nurses and midwives who had left our permanent register within the last five years to join. We also invited overseas applicants who had completed all parts of their NMC registration process except their OSCE (objective structured clinical examination).

The data below is taken at 30 September 2021 – the same as the data from our permanent register above in this report. For clarity, data from the Covid-19 temporary register is not included in figures 1–3 above.

Table 1

Total people on the Covid-19 temporary register by registration type.

	31 September 2021
Nurse	10,696
Midwife	798
Nurse and midwife	158
Total	11,652

Between April and September, 1,157 people in England left the Covid-19 temporary register to join the permanent register.

These numbers don't include people who are already registered with us moving to England, or people returning to the register.

The data in this report is based on the registered addresses of the professionals on our register.