

Welcome to our future midwife standards implementation webinar

Stay tuned, we'll be starting the
webinar shortly...





Future midwife:

**Transforming midwifery
care for everyone**

Dr Jacqui Williams, Senior
Midwifery Adviser (Education)

Verena Wallace, Senior Midwifery
Adviser (Policy)

How this webinar will work

- First, there will be a presentation for approximately 20 minutes
- Then we'll answer any questions you have
- Please feel free to ask any questions you have during the presentation
- You can also email any questions to educationandstandards@nmc-uk.org

Outline times for the webinar

Time	
12.30	Welcome & introductions
12.35	Presentation on the Standards of proficiency for midwives and Standards for pre-registration midwifery education
12.55	Discussion and questions
13.25	Summing up and next steps
13.30	Webinar close

The challenge

What standards of proficiency should we set to make sure newly qualified midwives at the point of registration are:

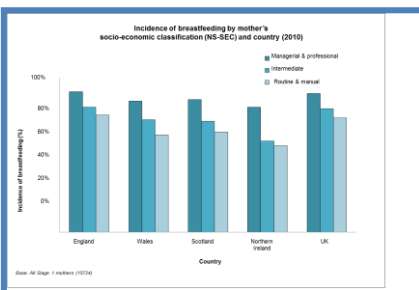
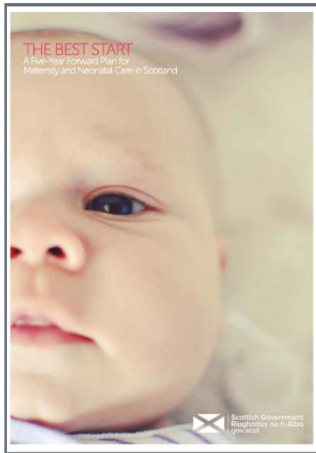
- able to meet the needs, views and preferences of women, newborn infants and families
- safe
- effective
- respectful
- kind and compassionate?

Midwifery: the changing context in the UK...

The Report of the Morecambe Bay Investigation



SUSTAINABLE DEVELOPMENT GOALS



Dignity in Childbirth

THE DIGNITY SURVEY 2013: WOMEN'S AND MIDWIVES' EXPERIENCES OF UK MATERNITY CARE



	For all childbearing women and infants	For childbearing women and infants with complications
Practice categories	<ul style="list-style-type: none"> Education, Information, Health promotion Assessment, Screening, Care planning Promotion of normal processes, prevention of complications 	<ul style="list-style-type: none"> First line management of complications Medical, obstetric, neonatal services
Organisation of care	Available, accessible, acceptable, good-quality services—adequate resources, competent workforce. Continuity, services integrated across community and facilities	
Values	Respect, communication, community knowledge, and understanding. Care tailored to women's circumstances and needs	
Philosophy	Optimising biological, psychological, social, and cultural processes, strengthening women's capabilities. Expectant management, using interventions only when indicated	
Care providers	Practitioners who combine clinical knowledge and skills with interpersonal and cultural competence. Division of roles and responsibilities based on need, competencies, and resources	



... and internationally

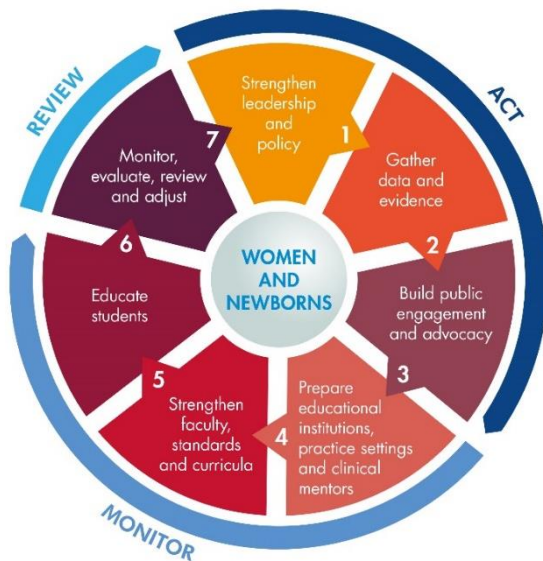
FRAMEWORK FOR ACTION



STRENGTHENING QUALITY MIDWIFERY EDUCATION
for
Universal Health Coverage 2030



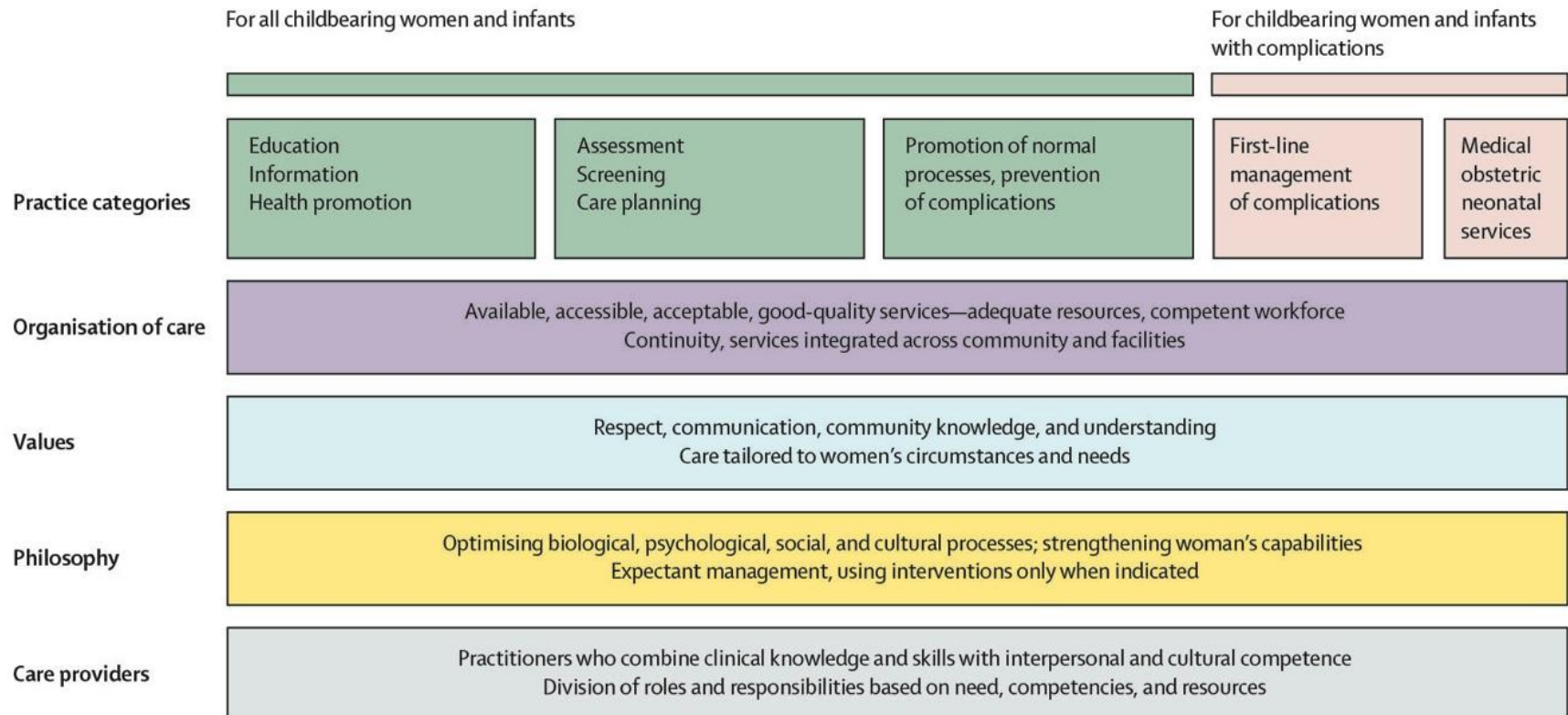
It's time to address the **stark under-investment** in midwifery education to **transform the quality of maternal and newborn health** #MidwiferyEd4SDGs



Evidence, key lessons & policy

- Existing and new and emerging evidence
- Changing demographics and population health
- Lessons from key reports and surveys
- National policy in the four countries

Evidence from The Lancet Series on Midwifery



The Thought Leadership Group



- Experts and representatives from across a broad range of backgrounds, including:
- Midwives, student midwives, advocates, managers, policymakers, educators and other health and care professionals
- 10 meetings over more than two years

External engagement (1)



What should the future of midwifery education look like?

Join us for a twitter chat!
Thursday 25 April
7.00 - 8.00pm

NMC Nursing & Midwifery Council

 Council of Deans of Health

@nmcnews | #futuremidwife | @councilofdeans



What do midwives of the future need to know to provide the best and safest care?




Get involved #futuremidwife

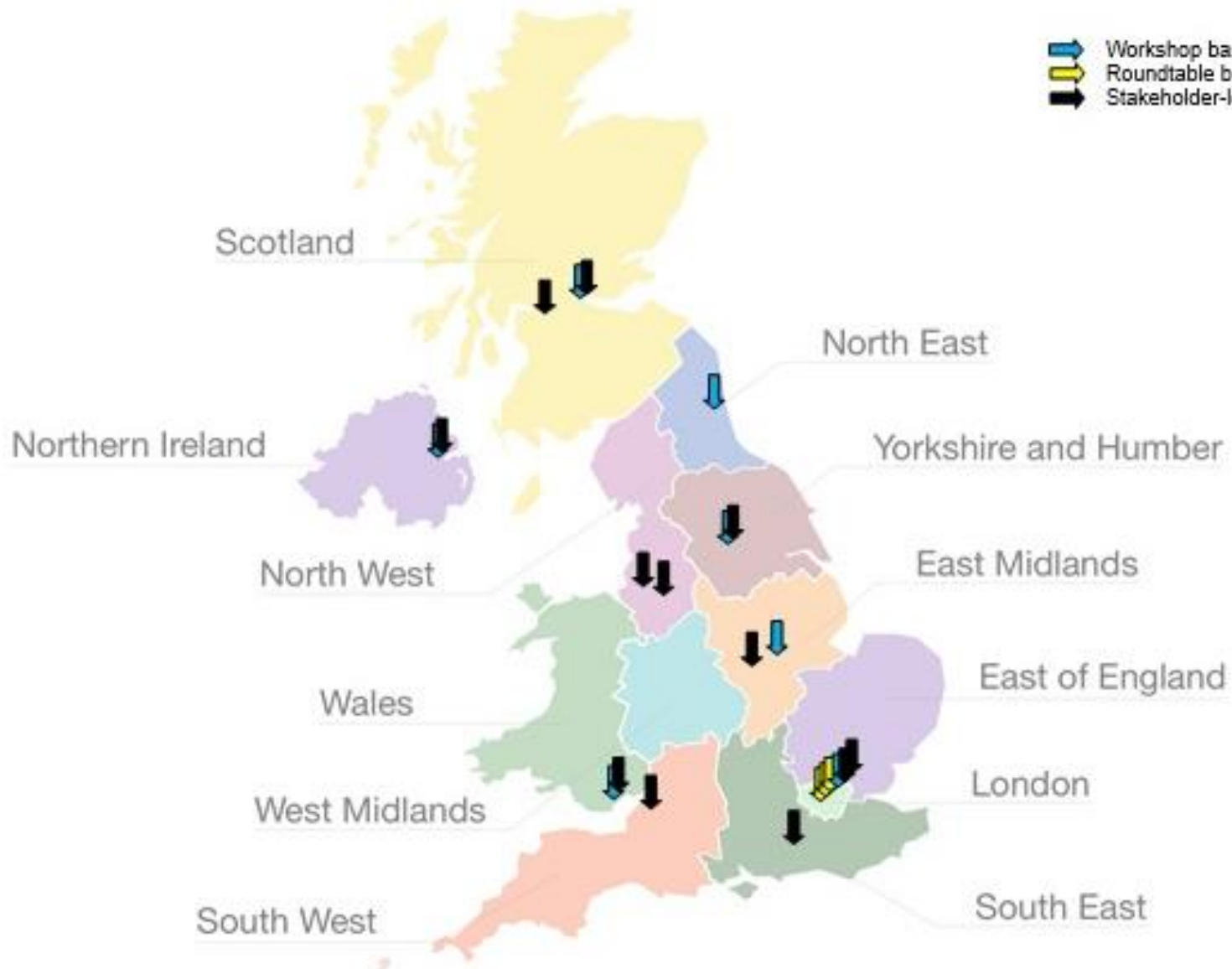
NMC Nursing & Midwifery Council



External engagement (2)

KEY:

-  Workshop based event
-  Roundtable based event
-  Stakeholder-led / Conference



External engagement (3)

- 600+ people in all four UK countries involved in **pre-consultation** engagement activities
- 3,000+ people engaged at events or online in **consultation** opportunities
- 1,600 responses to our consultation survey
- More than 1,000 responses from the public

NMC governance and review

- Regulatory review
- Legal review
- Thought Leadership Group
- Education Standards Reference Group
- Consultation Assimilation Teams
- Midwifery Panel
- Council

New standards for the future midwife



Enabling educators and midwives of the future to provide innovative education & the best and safest care for women & newborn infants

Key themes in the standards (1)

- Enabling and advocating for human rights of women and newborn infants
- Developing, finding, critiquing, using best evidence
- Taking personal responsibility for ongoing learning and development
- Enabling and advocating for needs, views, preferences, decisions

Key themes in the standards (2)

- Understanding local context, connecting with local communities
- Working across the whole continuum of care
- Providing continuity of care and carer
- Coordinating care - interdisciplinary and multiagency

Key themes in the standards (3)

- Optimising normal processes
- Anticipating, preventing, responding to complications
- Working to mitigate health and social inequalities
- Physical, psychological, social, cultural, spiritual factors
- Public health, health promotion and protection

Transformative change (1)

Focussed on the needs, views, preferences and decisions of women and the needs of newborn infants



Transformative change (2)

Supporting physical, psychological, social, cultural, and spiritual safety



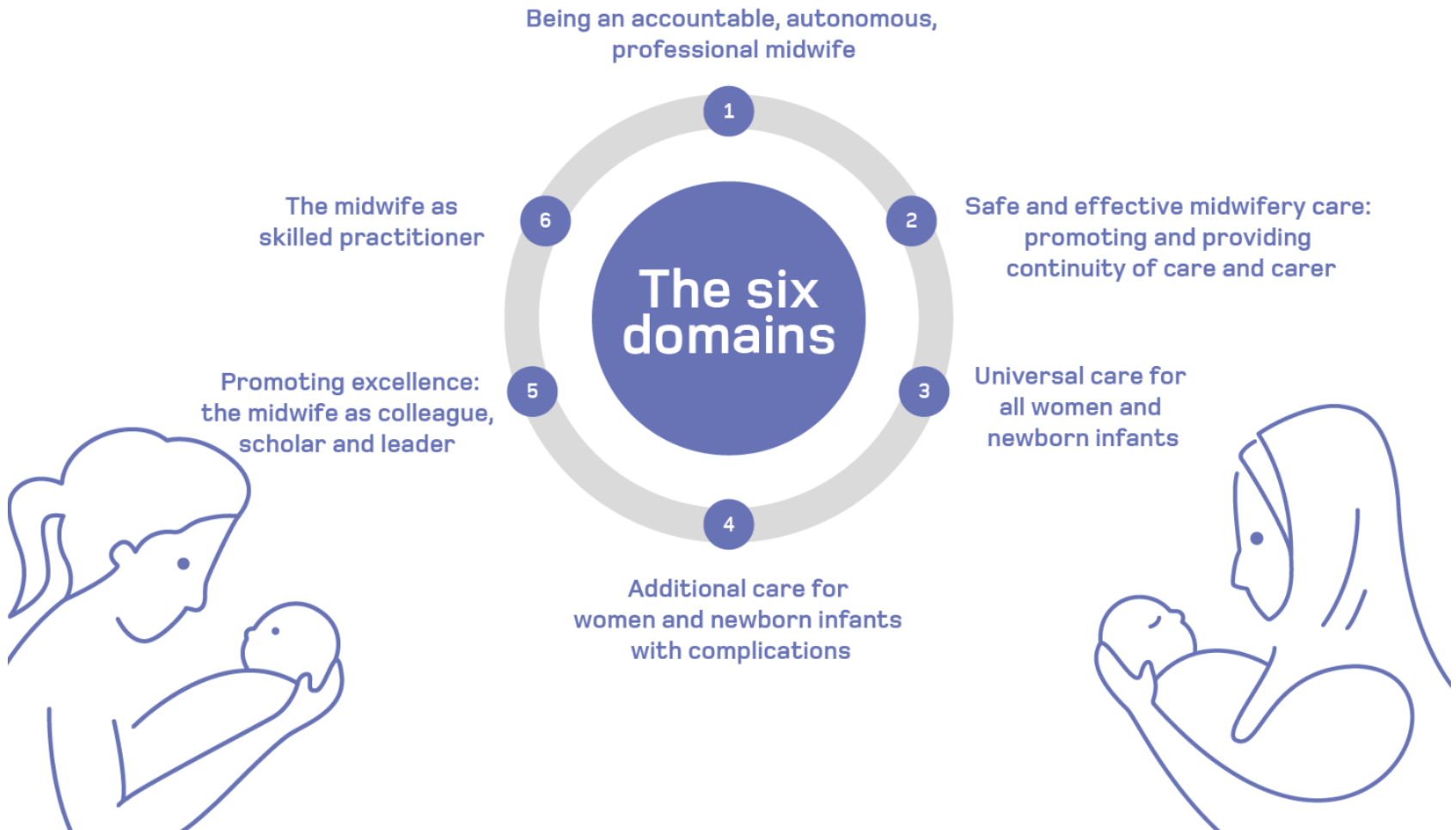
Transformative change (3)

Understanding the impact of pregnancy, labour and birth, postpartum, infant feeding and the early weeks of life on longer term health and wellbeing



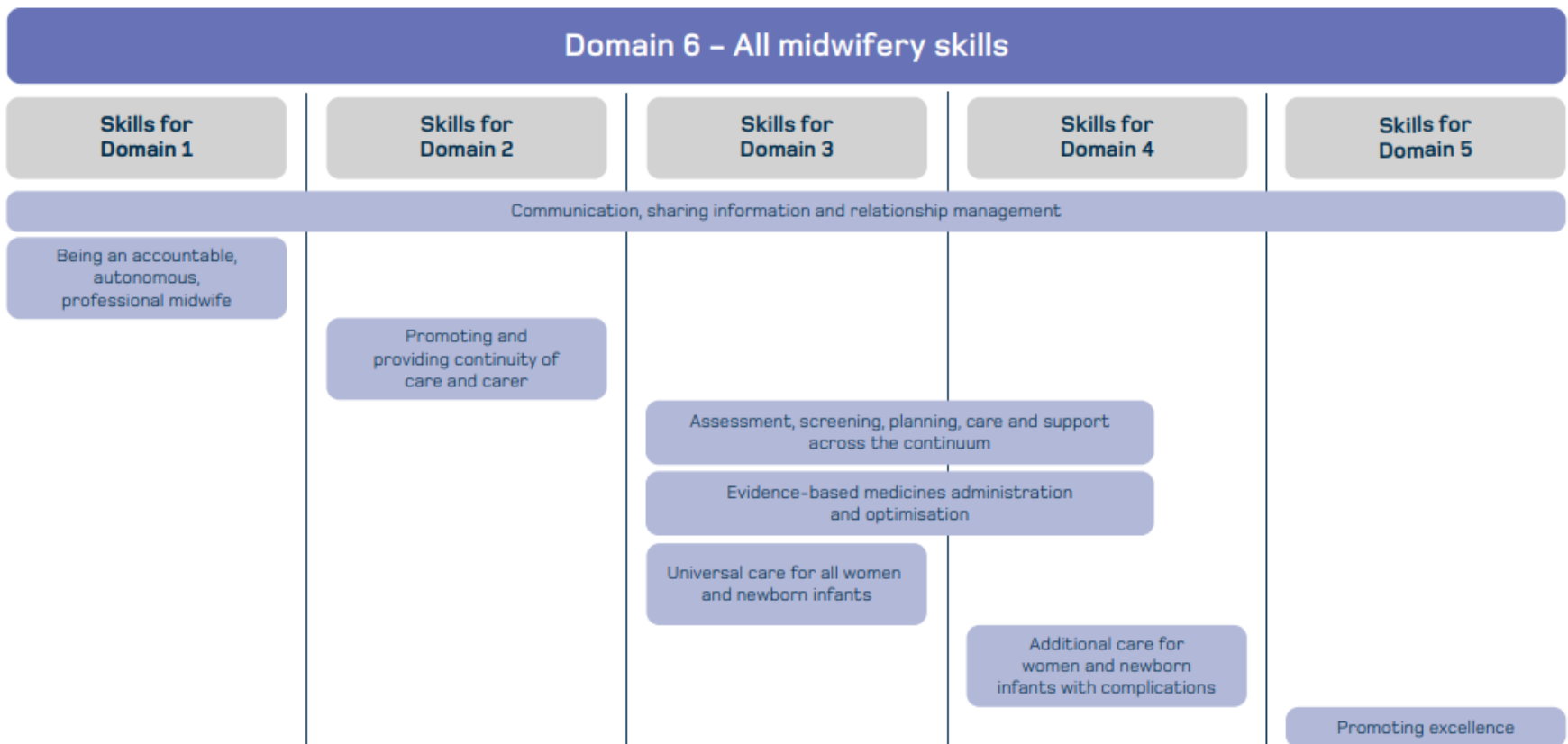
Standards of proficiency for midwives

Six inter-related domains



6: The midwife as skilled practitioner

Integrating knowledge and skills

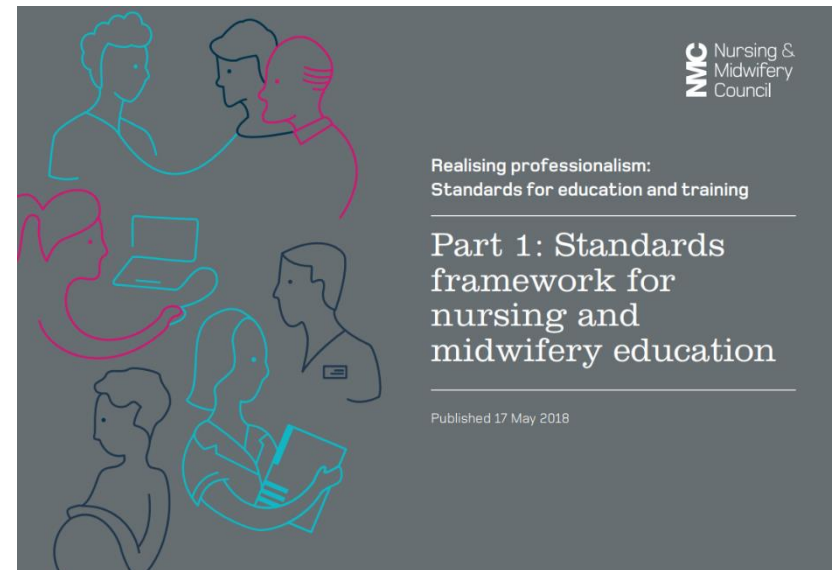


Standards for pre-registration midwifery programmes

Outcomes focussed & future proofed standards that
enable flexibility & pedagogical innovation

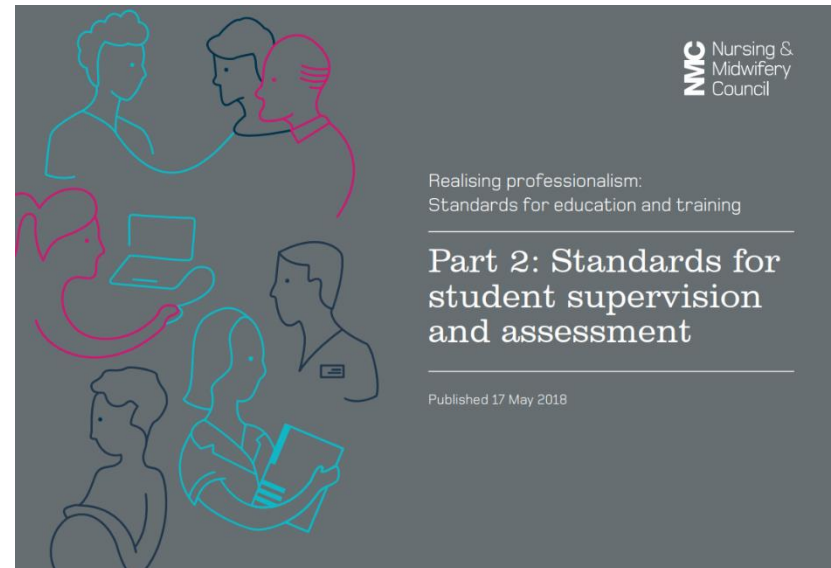
Part 1

- Learning culture
- Educational governance and quality
- Student empowerment
- Educators and assessors
- Curricula and assessment



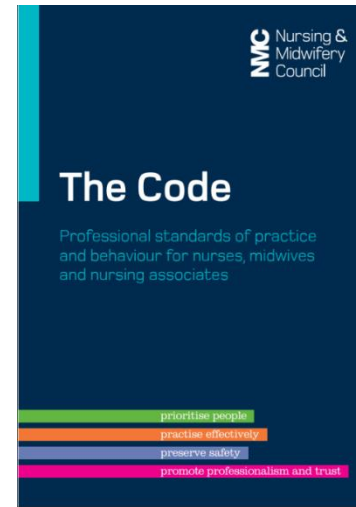
Part 2

- Effective practice learning
- Supervision of students
- Assessment of students and confirmation of proficiency



Part 3

- LME role
- Selection, admission and progression
- Curriculum
- Practice learning
- Supervision and assessment
- Qualification and award



The NMC's Quality Assurance process

Including 'top tips' for approval

New QA framework

- Development of a risk based approach
- More emphasis on QA of practice learning
 - Effective practice learning
 - Practice learning allocation/circuit
 - Supervision of students
 - Assessment of students and confirmation of progression and proficiency
- Gateway approach to approval

Programme approval summary

- Some AElS have gained approval of multiple routes
- Not all AElS have progressed through the gateways seamlessly
- Conditions set include:
 - Compliance with EU directive
 - Involvement of service users
 - Insufficient emphasis on caring for a range of people

Top tips for approvals (1)

Evidence presented at programme level should be explicit to reflect the *Standards framework for nursing and midwifery education*

- commitment to actively engage patients, service users, carers and the public in programme development and the proposed programme delivery
- Evidence and assurance from senior PLP/employers of their understanding, commitment and management to ensure students have supernumerary status
- Arrangements for supervision and assessment

Top Tips for approvals (2)

Gateway 3:

- Ensure quality documentary evidence is explicit on how the proposed programme meets the programme and proficiency standards
- When validating different routes ensure the routes are differentiated (direct entry Vs apprenticeship)
- Protected learning time to be explicit for NA and prescribing

Gateway 4:

- Demonstrate collaborative partnership working throughout

What do these standards mean for me?

Time for your questions



Next steps...



Thank you



educationandstandards@nmc-uk.org